

MILWAUKEE
ART
MUSEUM



Member Magazine

Sept-Dec 2022

Sloan

Contents

- 1 Letter from the Director
- 2 *The Ashcan School and The Eight: “Creating a National Art”*
- 5 *James Benning and Sharon Lockhart: Over Time, Chapter II*
- 6 *On Repeat: Serial Photography*
- 8 *David Claerbout: The Close*
- 10 New to the Collection Galleries
- 14 New Acquisition
- 15 Calendar
- 20 Learn + Play
- 22 Member Extras
- 24 Programs + Events
- 28 Museum Store



5



2

20



TOP Sharon Lockhart, *Moody Mart*, 2008. Courtesy the artist, Gladstone Gallery, and neugierriemschneider, Berlin. © Sharon Lockhart

CENTER George Benjamin Luks, *Bleecker and Carmine Streets, New York*, ca. 1905. Gift of Mr. and Mrs. Donald B. Abert and Mrs. Barbara Abert Tooman, M1976.14. Photo by John R. Glembin

BOTTOM Image courtesy of Matt Haas.

mam.org



Milwaukee Art Museum

700 North Art Museum Drive
Milwaukee, WI 53202
Info: 414-224-3200

Hours

Wed	10 a.m.-5 p.m.
Thurs	10 a.m.-8 p.m.
Fri-Sun	10 a.m.-5 p.m.

Admission

Members enjoy free admission to all the programs and events listed in the magazine unless otherwise noted.

Membership Office

414-224-3284
membership@mam.org
Mon-Fri, 9 a.m.-5 p.m.

COVER John Sloan, *Wayside Inn, Gloucester*, 1918. Gift of Mr. and Mrs. Donald B. Abert, M1974.25. Photo by John R. Glembin. © Artists Rights Society (ARS), New York



Dear Members,

The Milwaukee Art Museum was an important source of reconnection and reinvigoration for our community this past summer. From our first block party to Lakeside at MAM, events across our campus brought families and friends together to celebrate, create art, and enjoy the season. As our newly revitalized Member magazine reveals, we have many more exciting ways for you to connect over the days, months, and holidays to come.

Our fall-winter exhibition program underscores the exciting storytelling opportunities that live within the Museum's collection—opportunities made possible by this community's commitment to art as a public resource and the gifts of so many. Our upcoming shows invite you to discover unique accounts of the history of art, from *The Ashcan School and The Eight: "Creating a National Art,"* which—drawing on the Abert family's transformative contributions to the Museum's esteemed Ashcan School holdings—brings portraits of everyday life at the turn of the century into dialogue with today's most pressing social issues; to *A Very Strong Likeness of Her*, which illuminates the layered, complex histories contained in just a single painting from our European art collection. I'm also delighted to share that we will be the

first museum in the country to present *The Close* (2022), a technologically and temporally innovative video by the Belgian-based artist David Claerbout that uses reconstructed, century-old footage, continuing the Museum's tradition of vanguard collaborations.

We're thrilled to provide you with the first look at these exhibitions on preview days and a range of special programs and events offering opportunities to reflect, connect, and find inspiration. Our Expert Series welcomes the artist Ericka Walker, who created the Chéret-inspired poster for *Always New*, and the popular Día de los Muertos family celebration returns on October 23, as do double discount days in the store to shop one-of-a-kind gifts for loved ones.

This time of year, more than any other, we are welcoming family and friends into our homes. I hope you find in the Museum an extension of your home, whether for quiet moments of contemplation and discovery or dynamic conversations with new friends.

Warmly,

Marcelle Polednik, PhD
Donna and Donald Baumgartner Director

The Ashcan School and The Eight: “Creating a National Art”

Sept 23, 2022–Feb 19, 2023 | Bradley Family Gallery

Recognized as America’s first modern art movement, the Ashcan School and The Eight captured everyday life at the beginning of the 20th century, a period of rapid industrialization and great cultural change. Rejecting conventional subjects and exhibition practices traditionally accepted by art institutions at the time, these artists embraced a loose painterly style to portray factories and immigrants, congested urban streets, and popular forms of entertainment. Their output was divisive, as some critics praised the artists for “creating a national art” while others dismissed them as painters of rubbish or “ashcans.”

The Ashcan School and The Eight: “Creating a National Art” reexamines these artists and the social issues they depicted, many of which remain relevant today. The exhibition mines the Milwaukee Art Museum’s significant collection of works by the Ashcan School and The Eight, one of the largest holdings of its kind in the United States. Prints, drawings, paintings, and pastels by renowned artists including Robert Henri, George Bellows, and John Sloan are among the works featured, revealing the wide range of subjects the group captured and the breadth of their artistic practices.

Supporting Sponsors:

Genie and David Meissner and the Greater Milwaukee Foundation’s Donald and Barbara Abert Fund Milwaukee Art Museum’s American Arts Society in honor of George A. Evans, Jr.
Wyeth Foundation for American Art



Contributing Sponsors:

Kay and Ken Hamel in memory of Kevin Fahey

Terra Foundation for American Art

The Milwaukee Art Museum extends its sincere thanks to the 2022 Visionaries:

Donna and Donald Baumgartner
Murph Burke

Joel and Caran Quadracci

Sue and Bud Selig

Jeff and Gail Yabuki and the Yabuki Family Foundation

RIGHT **Robert Henri**, *Dutch Joe (Jopie van Slooten)*, 1910. Gift of the Samuel O. Buckner Collection, M1919.9. Photo by John R. Glembin



Member Preview Day + Opening Lecture

Thurs, Sept 22, 10 a.m.–8 p.m.

Opening lecture: 6:15 p.m.

See the exhibition before it opens to the public, and join us for the opening lecture, presented by Brandon Ruud, exhibition curator and former Abert Family Curator of American Art.

Member Mingle + Gallery Talk

Thurs, Oct 13

Member Mingle: 5–6 p.m.

Gallery Talk: 6 p.m.

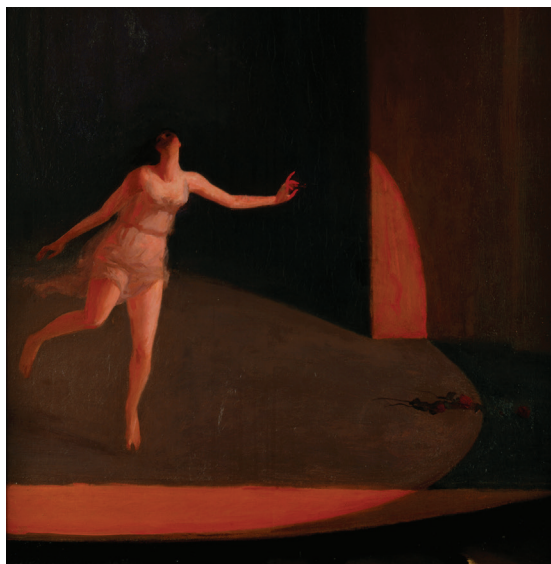
Meet other Members over a drink from the cash bar (complimentary for Art Advocate level Members and above) before exploring the exhibition on a curator-led tour. RSVP to membership@mam.org or 414-224-3284.

Expert Series: “The Ashcan School and The Eight: Honoring Complex Representations”

Thurs, Nov 3, 6–7:30 p.m.

Hear from a panel of experts about the need for representation when creating a “national art.”

Expert Series sponsored by: Layton Art Collection Inc.



Gallery Talks

Thurs, Sept 29, Nov 10, noon

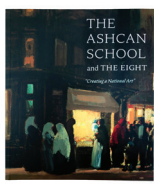
Thurs, Oct 13, 6 p.m.

With Chyna Bounds, assistant curator

Audio Guide

Bring your earbuds and delve deeper into the stories behind the exhibition’s artworks, artists, and collectors on your mobile device at mam.org/guide.

Exhibition Catalogue



Pick up your copy from the Museum Store.

Softcover
\$29.95/\$26.96 Member
Hardcover
\$39.95/\$35.96 Member

John Sloan, *Isadora Duncan* (detail), 1911. Gift of Mr. and Mrs. Donald B. Abert, M1969.27. Photo by P. Richard Eells. © Artists Rights Society (ARS), New York

James Benning and Sharon Lockhart: Over Time, Chapter II

Sept 2, 2022–Jan 1, 2023 | Herzfeld Center for Photography and Media Arts

California's Mojave Desert and a U.S. naval shipyard in Maine are paired side by side in two single-shot films presented together in *Over Time, Chapter II*. This follow-up to the Museum's 2019 exhibition *Over Time, Chapter I* revisits intersections between the practices of artists James Benning (b. 1942), a Milwaukee native, and Sharon Lockhart (b. 1964). The two artists examine the relationship of film to still photography in their work, and both often cite the other as an influence on their practice. Their respective films, *BNSF* and *LUNCH BREAK*, employ striking views over an extended length of time to spotlight our global economy.



Exhibitions in the Herzfeld Center for Photography and Media Arts sponsored by: Herzfeld Foundation

Supporting Sponsor: Greystone Foundation

Member Preview Day

Thurs, Sept 1, 10 a.m.–8 p.m.

See the exhibition before it opens to the public.

James Benning, *BNSF* (still), 2012. Courtesy the artist and neugerriemschneider, Berlin.
© James Benning

On Repeat: Serial Photography

Sept 2, 2022–Jan 1, 2023 | Herzfeld Center for Photography and Media Arts

Throughout the history of photography, lens-based artists have captivated viewers through repetition and variation. *On Repeat: Serial Photography* draws on the Museum's varied collection of 20th- and 21st-century photography to examine the ways artists have employed serial and sequential imagery to explore and express the multidimensionality of their subjects.

Among the exhibition's highlights are Rineke Dijkstra's *Almerisa* (1994–2008), a serial portrait that traces one girl's evolution from childhood to motherhood, and Bernd and Hilla Bechers' *Water Towers (Cylindrical)* (1978), a typology that brings focused attention to familiar and often overlooked industrial structures. Another notable

inclusion—John Houck's *First Set* (2015)—pairs different media, prompting viewers to consider the frequently competitive relationship between painting and photography.



Exhibitions in the Herzfeld Center
for Photography and Media Arts
sponsored by: Herzfeld Foundation

ABOVE **John Houck**, *First Set*, 2015. Purchase, with funds in memory of Betty Croasdale and John E. Julien, M2016.76. Courtesy of Jessica Silverman, San Francisco, and Marianne Boesky Gallery, New York

RIGHT **Bernd and Hilla Becher**, *Water Towers (Cylindrical)*, 1978. Gift of Herbert H. Kohl Charities, Inc., M1984.117. Photo by Larry Sanders, Courtesy Sonnabend Gallery © Estate Bernd & Hilla Becher, represented by Max Becher

Member Preview Day

Thurs, Sept 1, 10 a.m.–8 p.m.

See the exhibition before it opens to the public.

Haberman Local Luminaries

Thurs, Oct 27, 6:15–7:15 p.m.

Join notable figures from the Milwaukee area in the gallery as they offer new perspectives about the works on view. This program is named in honor of the late F. William Haberman, former president of the Herzfeld Foundation.

Sponsored by: Milwaukee Art Museum's Photography Council

Gallery Talks

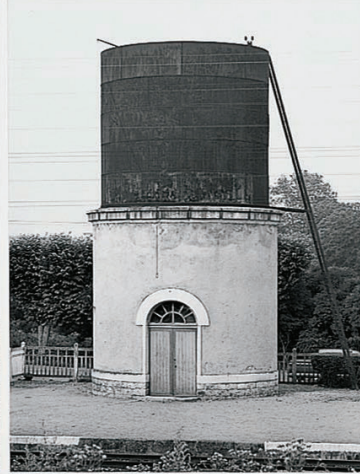
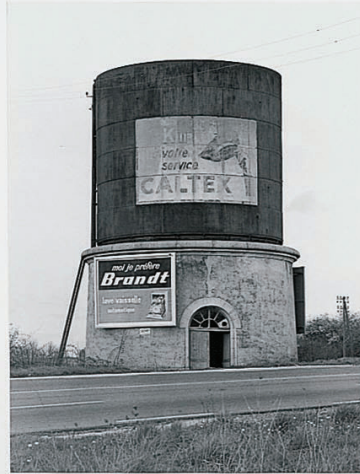
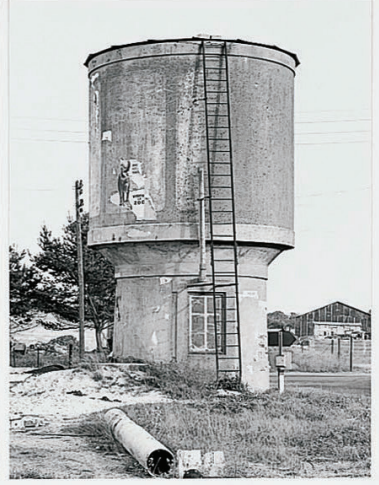
Thurs, Sept 8, Dec 1, noon

With Ariel Pate, assistant curator of photography

Sat, Nov 12, 1 p.m.

With artist Sonja Thomsen

Sponsored by: Milwaukee Art Museum's Contemporary Art Society and Photography Council



David Claerbout: The Close

Nov 18, 2022–Jan 8, 2023 | Baker/Rowland Galleries

“We could say that [*The Close*] is a journey between the past, the present and the future of the filmic image.”

—David Claerbout

The Close, a new video the Belgium-based artist David Claerbout completed in 2022, will be presented at the Milwaukee Art Museum in November, marking the work’s premiere at a U.S. museum. It will be accompanied by six related drawings the artist created at the completion of production, which function as film stills. Claerbout is known for his works using photography, video, digital technology, and sound. His large-scale, immersive installations consider questions of time, memory, and truth.

The Close is conceived as a journey traversing the past and future of the camera, bringing together a reconstruction of amateur footage made around 1920 and a digital 3D rendering of that footage. The silent scene, which shows barefoot children in a brick-walled, one-way alley—known as a “close” in English—transitions from grainy footage of a child into a highly detailed, quasi-technical portrait, objectifying face, eyes, and body. As the video freezes and holds the small child enraptured, singing voices set in. A recording of 24 spatially distinct singers performing Arvo Pärt’s 2004 vocal composition *Da Pacem Domine* surrounds the isolated child, who has become the focus of the work, with an architecture of voices.

Member Preview Day

Thurs, Nov 17, 10 a.m.–8 p.m.

See the exhibition before it opens to the public.

Member Mingle + Artist Talk

Thurs, Dec 8

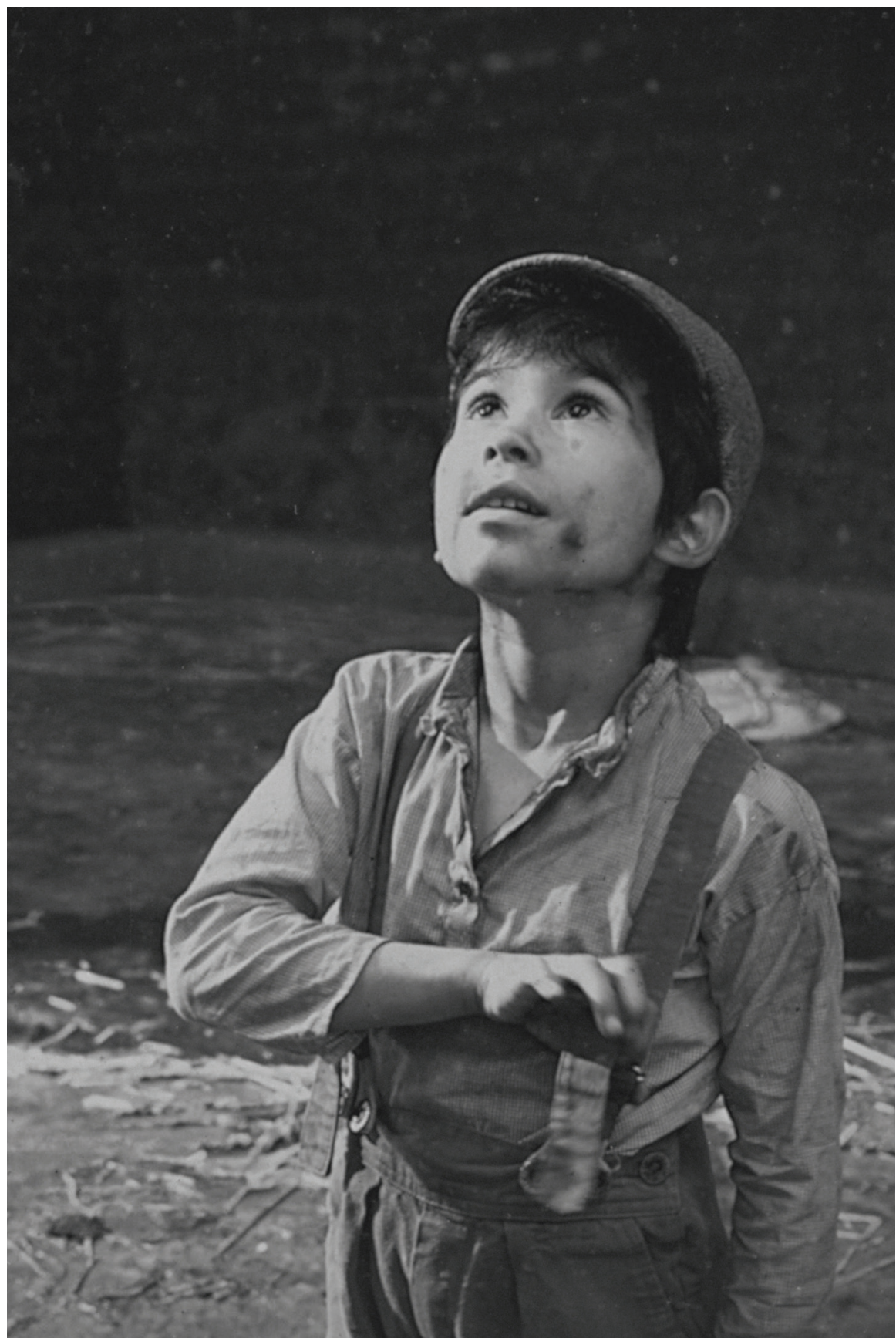
Member Mingle: 5–6 p.m.

Artist Talk: 6:15 p.m.

Meet other Members over a drink from the cash bar (complimentary for Art Advocate level Members and above) before joining a talk presented by the artist. RSVP to membership@mam.org or 414-224-3284.

Artist Talk sponsored by:
Milwaukee Art Museum’s
Contemporary Art Society

David Claerbout, *The Close* (still), 2022.
© David Claerbout. Courtesy the artist and Sean Kelly, New York



New to the Collection Galleries

Playing Favorites: Spotlight on the Petullo Collection

Oct 8, 2022–April 2, 2023

**THE ANTHONY PETULLO
GALLERY, MEZZANINE
LEVEL, GALLERY K122**

Ten years ago, the Milwaukee Art Museum became a leading institution in North America for American and European self-taught art. With *Playing Favorites*, we celebrate the large gift from the local collector Anthony Petullo that catapulted the Museum to this distinctive position. This special installation features more than 20 drawings and paintings by self-taught artists such as Minnie Evans, Martín Ramírez, Alfred Wallis, and Adolf Wölfli, including some of Petullo's favorite works from his 2012 gift and others he is lending from his personal collection.



Gallery Talk

Thurs, Oct 20, noon

With the collector
Anthony Petullo

Minnie Evans, *Untitled*, 1960/63/66.
Gift of Anthony Petullo, M2012.44.
Photo by Larry Sanders

After Ashcan: The 14th Street School

Dec 9, 2022–March 26, 2023

**THE GODFREY AMERICAN ART WING
LEVEL 2, GALLERY K230**

Learn about artists Isabel Bishop, Reginald Marsh, and Raphael Soyer through their prints in *After Ashcan: The 14th Street School*, presented in connection with the exhibition *The Ashcan School and The Eight: "Creating a National Art."* These 20th-century artists, who had studios on 14th Street in Lower Manhattan and were taught by Ashcan artists, similarly focused on subjects from everyday urban life, depicting scenes around Union Square and the Bowery District in the 1920s and 1930s.



Gallery Talk

Thurs, Dec 15, noon

With Nikki Otten, associate curator of prints and drawings

Isabel Bishop, *Noon Hour*, 1935, printed 1946. Purchase, with funds from Arthur Gebhardt, M2002.127. Photo by John R. Glembin



F. de Meunier
1785

A Very Strong Likeness of Her: Portraiture and Identity in the British Colonial World

Dec 16, 2022–April 9, 2023

**EUROPEAN ART GALLERIES, LEVEL 2,
GALLERY S202**

Focusing on a singular work from the Museum's collection, *A Very Strong Likeness of Her* explores the challenging and sometimes conflicting histories that an artwork can represent. On its surface, the English artist Francis Cotes's (1726–1770) portrait of Miss Frances Lee is a charming image of a young girl and her napkin-turned-rabbit companion. The exhibition's close study of the painting, however, reveals a complex story of identity, family dynamics, and British colonialism in Jamaica. *A Very Strong Likeness of Her* employs a range of materials to bring to life the underlying narratives in this deceptively simple painting.



ABOVE George Garthorne, commissioned by Royal African Company, *Monteith*, 1688. Purchase, Virginia Booth Vogel Acquisition Fund, M2003.90. Photo by John R. Glembin

RIGHT Francis Cotes, *Miss Frances Lee*, 1769. Gift of Mr. and Mrs. William D. Vogel, M1964.5. Photo by Larry Sanders

New Acquisition in the Impressionism Gallery

Plan your next trip to the Impressionism gallery, a visitor favorite, to experience *Nénuphars*, a painting by the Swedish artist Julia Beck (1853–1935) that the Museum acquired in June 2022. The water lily (nenuphar) was a motif that Beck explored throughout her career, one that Claude Monet made famous nearly 10 years after Beck completed *Nénuphars*. The lilies in this painting's lush landscape delineate the surface of the water and interrupt the reflection of the sky and surrounding scenery. Beck's expressive brushwork borders on abstraction, suggesting that she worked quickly to capture the light before it changed, a challenge for many 19th-century painters.

Beck was among several Scandinavian artists who moved to France but one of only a few women expatriate



artists to build a successful career there. She initially traveled with other Swedish artists and intellectuals to Paris and throughout the French countryside, but she eventually settled on her own in the small village of Vaucresson, Seine-et-Oise, southwest of Paris.

Julia Beck, *Nénuphars*, ca. 1890. Purchase with funds from the Lucia K. Stern Trust, M2022.24

Also on View

Neapolitan Crèche

Dec 7, 2022–Jan 3, 2023

Always New: The Posters of Jules Chéret

Closes Oct 16, 2022

Distinctive Individuality: George Mann Niedecken's Milwaukee Interiors

Closes Sept 25, 2022

Convoy of Wounded: An Artist's Experience of War

Layton Art Collection

Focus Exhibition

Closes Nov 20, 2022



LEFT Image courtesy of Matt Haas.

RIGHT **George Mann Niedecken**, *Dining Table and Eight Chairs for the Frank T. Boesel Residence, Milwaukee, Wisconsin* (pictured with seating for four), ca. 1907. Purchase, with funds from the Mae E. Demmer Charitable Trust in memory of Lawrence E. Demmer, M2012.297.1a-d-9. Photo by John R. Glembin

BOTTOM **Edouard Castres**, *Convoy of Wounded (Franco-Prussian War 1870)*, 1870/71. Layton Art Collection Inc., Gift of Frederick Layton, L1894.1. Photo by John R. Glembin

Sept

1 THURS

Member Preview Day:
On Repeat: *Serial
Photography*

*James Benning and Sharon
Lockhart: Over Time,
Chapter II*
10 a.m.–8 p.m.

2 FRI

Opens:
On Repeat: *Serial
Photography*

*James Benning and Sharon
Lockhart: Over Time,
Chapter II*

3 SAT

Kohl's Art Studio
10 a.m.–4 p.m.

Story Time in the Galleries
10:30 a.m.

Drop-In Tour
2 p.m.

4 SUN

Kohl's Art Studio
10 a.m.–4 p.m.

8 THURS

Gallery Talk: *On Repeat:
Serial Photography*
Noon

9 FRI

Play Date with Art:
Dapper Dots
10 a.m.–noon

10 SAT

Kohl's Art Studio
10 a.m.–4 p.m.

Story Time in the Galleries
10:30 a.m.

Slow Art Saturday
10:30 a.m.

Drop-In Tour
2 p.m.

11 SUN

Kohl's Art Studio
10 a.m.–4 p.m.

Performance: Present
Music's "French
Connection"
7:30 p.m. 📞💰

14 WED

Group Therapy: Black
Space at MAM: BIPOC
Women's Group
5:30 p.m. 📞FREE

17 SAT

Kohl's Art Studio
10 a.m.–4 p.m.

Story Time in the Galleries
10:30 a.m.

Focus Tour +
Mini French Lesson:
Always New
2–3 p.m.

Drop-In Tour
2 p.m.

18 SUN

Kohl's Art Studio
10 a.m.–4 p.m.



21 WED

Group Therapy: Black
Space at MAM: BIPOC
LGBTQIA Group
5:30 p.m. 📞FREE

22 THURS

Member Preview Day +
Opening Lecture:
*The Ashcan School and
The Eight: "Creating a
National Art"*
10 a.m.–8 p.m.
Lecture: 6:15 p.m.

23 FRI

Opens: *The Ashcan School
and The Eight: "Creating a
National Art"*

24 SAT

Kohl's Art Studio
10 a.m.–4 p.m.

Doors Open Milwaukee
10 a.m.–5 p.m.

Story Time in the Galleries
10:30 a.m.

25 SUN

Closes: *Distinctive
Individuality: George Mann
Niedecken's Milwaukee
Interiors*

Kohl's Art Studio
10 a.m.–4 p.m.

Doors Open Milwaukee
10 a.m.–5 p.m.

28 WED

Group Therapy: Black
Space at MAM: BIPOC
Men's Group
5:30 p.m. 📞FREE

29 THURS

Gallery Talk: *The Ashcan
School and The Eight*
Noon

Annual Layton Lecture:
*Convoy of Wounded: An
Artist's Experience of War*
6:15–7:15 p.m.

💰 Payment required

FREE Free to the public

📞 Reservations
required

Oct

1 SAT

Kohl's Art Studio
10 a.m.–4 p.m.

Story Time in the Galleries
10:30 a.m.

Gallery Talk: *Always New*
11 a.m.

Expert Series:
Artist Ericka Walker
1 p.m. **FREE**

Drop-In Tour
2 p.m.

2 SUN

Kohl's Art Studio
10 a.m.–4 p.m.

6 THURS

Discussion Group:
Amazing Faiths Project:
Faith as the Artist's Muse
5:30 p.m. **FREE**

8 SAT

Opens: *Playing Favorites:
Spotlight on the Petullo
Collection*

Kohl's Art Studio
10 a.m.–4 p.m.

Story Time in the Galleries
10:30 a.m.

Slow Art Saturday
10:30 a.m.

Focus Tour +
Mini French Lesson:
Always New
2–3 p.m.

Drop-In Tour
2 p.m.

9 SUN

Kohl's Art Studio
10 a.m.–4 p.m.

12 WED

Art Club: Online
6 Wed through Nov 16
4:30–6 p.m. **FREE**

Member Curator Tour and
Reception: *Always New*
(Partner level and above)
5:30–8 p.m. **FREE**

13 THURS

Gallery Talk: *Always New*
Noon

Art Club: Online
6 Thurs through Nov 17
4:30–6 p.m. **FREE**

Member Mingle + Gallery
Talk: *The Ashcan School
and The Eight*
5–7 p.m. **FREE**

Gallery Talk: *The Ashcan
School and The Eight*
6 p.m.

14 FRI

Play Date with Art:
Totally Tubular
10 a.m.–noon

15 SAT

Kohl's Art Studio
10 a.m.–4 p.m.

Story Time in the Galleries
10:30 a.m.

Drop-In Tour
2 p.m.

16 SUN

Closes: *Always New: The
Posters of Jules Chéret*

Kohl's Art Studio
10 a.m.–4 p.m.



19 WED

Member Coffee with
the Director
(President's Circle level
and above)
11 a.m. **FREE**

20 THURS

Gallery Talk: *Playing
Favorites*
Noon

Member Coffee with
the Director
(President's Circle level
and above)
6 p.m. **FREE**

22 SAT

Kohl's Art Studio
10 a.m.–4 p.m.

Story Time in the Galleries
10:30 a.m.

Drop-In Tour
2 p.m.

23 SUN

Kohl's Art Studio
10 a.m.–4 p.m.

Family Sundays:
Día de los Muertos
10 a.m.–4 p.m.

24 MON

Annual Members' Meeting
6–7 p.m. **FREE**

27 THURS

Haberman Local
Luminaries: *On Repeat:
Serial Photography*
6:15–7:15 p.m.

29 SAT

Kohl's Art Studio
10 a.m.–4 p.m.

Story Time in the Galleries
10:30 a.m.

Drop-In Tour
2 p.m.

30 SUN

Kohl's Art Studio
10 a.m.–4 p.m.

THIS SPREAD Images courtesy of
Matt Haas.

Nov

Special Hours

Thanksgiving Day
Closed

Christmas Eve Day
Open
10 a.m.–3 p.m.

Christmas Day
Closed

3 THURS

Expert Series: “The Ashcan School and The Eight: Honoring Complex Representations”
6–7:30 p.m. FREE

5 SAT

Kohl’s Art Studio
10 a.m.–4 p.m.

Story Time in the Galleries
10:30 a.m.

Drop-In Tour
2 p.m.

6 SUN

Kohl’s Art Studio
10 a.m.–4 p.m.

10 THURS

Gallery Talk: *The Ashcan School and The Eight*
Noon

Lecture: “A Fresh Look at Bonnard: Conserving *Girl in Straw Hat*”
6:15–7:15 p.m.

11 FRI

Play Date with Art:
Fill in the Lines
10 a.m.–noon

12 SAT

Kohl’s Art Studio
10 a.m.–4 p.m.

Story Time in the Galleries
10:30 a.m.

Slow Art Saturday
10:30 a.m.

Artist Gallery Talk:
On Repeat: Serial Photography
1 p.m.

Drop-In Tour
2 p.m.

13 SUN

Kohl’s Art Studio
10 a.m.–4 p.m.

17 THURS

Member Preview Day:
David Claerbout: The Close
10 a.m.–8 p.m.

18 FRI

Opens: *David Claerbout: The Close*

19 SAT

Kohl’s Art Studio
10 a.m.–4 p.m.

Story Time in the Galleries
10:30 a.m.

Drop-In Tour
2 p.m.

20 SUN

Closes: *Convoy of Wounded: An Artist’s Experience of War*

Kohl’s Art Studio
10 a.m.–4 p.m.

24 THURS

THANKSGIVING DAY
Museum Closed

25 FRI

Museum Store: Member Double Discount Day

26 SAT

Museum Store: Member Double Discount Day

Kohl’s Art Studio
10 a.m.–4 p.m.

Story Time in the Galleries
10:30 a.m.

Drop-In Tour
2 p.m.

27 SUN

Museum Store: Member Double Discount Day

Kohl’s Art Studio
10 a.m.–4 p.m.

Museum Store Sunday
10 a.m.–5 p.m.

28 MON

Museum Store: Cyber Monday
Free shipping for Members

29 TUES

Giving Tuesday

30 WED

Group Therapy: Black Space at MAM: BIPOC Women’s Group
5:30 p.m. FREE

BELOW Image courtesy of Kat Schleicher.



Giving Tuesday

Tues, Nov 29

Make an impact at your art museum on this global day of generosity at mam.org/support.

Dec

1 THURS

Museum Store: Member Double Discount Day

Gallery Talk: *On Repeat: Serial Photography*
Noon

3 SAT

Kohl's Art Studio
10 a.m.-4 p.m.

Story Time in the Galleries
10:30 a.m.

Drop-In Tour
2 p.m.

4 SUN

Kohl's Art Studio
10 a.m.-4 p.m.

7 WED

Neapolitan Crêche on View

Group Therapy: Black Space at MAM: BIPOC LGBTQIA Group
5:30 p.m. 📞 **FREE**

8 THURS

Museum Store: Member Double Discount Day

Member Mingle + Artist Talk: David Claerbout
5-7:30 p.m. 📞

Artist Talk: David Claerbout
6:15 p.m.

9 FRI

Opens: *After Ashcan: The 14th Street School*

Play Date with Art: Terrific Towers
10 a.m.-noon

10 SAT

Kohl's Art Studio
10 a.m.-4 p.m.

Story Time in the Galleries
10:30 a.m.

Drop-In Tour
2 p.m.

11 SUN

Kohl's Art Studio
10 a.m.-4 p.m.

14 WED

Group Therapy: Black Space at MAM: BIPOC Men's Group
5:30 p.m. 📞 **FREE**

15 THURS

Museum Store: Member Double Discount Day

Gallery Talk: *After Ashcan*
Noon

16 FRI

Opens: *A Very Strong Likeness of Her: Portraiture and Identity in the British Colonial World*

17 SAT

Kohl's Art Studio
10 a.m.-4 p.m.

Story Time in the Galleries
10:30 a.m.

Drop-In Tour
2 p.m.

18 SUN

Kohl's Art Studio
10 a.m.-4 p.m.

22 THURS

Museum Store: Member Double Discount Day



24 SAT

CHRISTMAS EVE DAY
Open | 10 a.m.-3 p.m.

25 SUN

CHRISTMAS DAY
Museum Closed

29 THURS

Museum Store: Member Double Discount Day




31 SAT

Kohl's Art Studio
10 a.m.-4 p.m.

Story Time in the Galleries
10:30 a.m.

Drop-In Tour
2 p.m.

ABOVE Image courtesy of Matt Haas.

-  Payment required
-  Free to the public
-  Reservations required

Learn + Play

Kohl's Art Studio

Sat–Sun, 10 a.m.–4 p.m.

Drop in for family art-making activities inspired by the Museum's collection and exhibitions. Discover ideas for making art at home at mam.org/art-studio.

Supported by **KOHL'S**

ArtPack Station

Open during Museum hours

Stop by to pick up a SketchPack and try your hand at re-creating your favorite artworks in the galleries.

Play Date with Art

Ages 5 and under (with adult)

Fridays, 10 a.m.–noon

(Singing Time: 10:30 and 11:15 a.m.)

It's never too early to learn to love art! Join us in Windhover Hall, and create art together.

Sept 9: Dapper Dots

Oct 14: Totally Tubular

Nov 11: Fill in the Lines

Dec 9: Terrific Towers

Story Time in the Galleries

Saturdays, 10:30 a.m.

Listen to a story that relates to a work of art in the galleries, and then create a drawing inspired by what you have seen and heard.

Art Club: Online

Create art, learn about works in the collection, and make friends in this six-session virtual program. Supplies are included. Visit mam.org/learn/classes to register and for information on scholarships.

Ages 6–10

Thurs, Oct 13–Nov 17

Ages 11–15

Wed, Oct 12–Nov 16

4:30–6 p.m.

\$225/\$150 Members

ArtPacks, Play Date with Art, and Story Time in the Galleries are sponsored by Four-Four Foundation and an anonymous donor.

Family Sundays: Día de los Muertos

Sun, Oct 23, 10 a.m.–4 p.m.

Bring family and friends to the Museum to explore the colors and symbols of Day of the Dead at this annual visitor favorite. Learn about the holiday's special traditions through a range of hands-on activities, from making paper flowers to adding remembrances of someone special who has passed to the community *ofrenda*.

For more than 25 years, the Museum has partnered with local artists and organizations to celebrate Día de los Muertos. Our special guests have included artists José Chavez, Celeste Contreras, and Debbie Sajnani and the national award-winning Latino Arts String Program.

Presenting Sponsor: Catherine and Bill Perez

Contributing Sponsor: Judy Keyes

Image courtesy of Matt Haas.



Member Extras

Annual Members' Meeting

Mon, Oct 24, 6–7 p.m.

Join the Museum's Member family for an advance look at all the Museum has planned for the year ahead. Marcelle Polednik, PhD, Donna and Donald Baumgartner Director, will share a preview of the exhibitions and initiatives to come. You will receive an email invitation with the details in October.

Please contact us at membership@mam.org if you are not receiving our email communications.





Members enjoy different benefits based on their level of membership. Upgrade your membership at any time for access to additional exclusive events. Contact the membership team at 414-224-3284, Monday–Friday, 9 a.m.–5 p.m., to learn more.

ABOVE Image courtesy of Kat Schleicher.

LEFT Image courtesy of Front Room Studios.

Curator Tour and Reception:
Always New: The Posters of Jules Chéret

Wed, Oct 12, 5:30–8 p.m.

Open to Partner (\$1,200) level Members and above

Enjoy an invite-only tour through the *Always New* exhibition with Nikki Otten, associate curator of prints and drawings, as she shares behind-the-scenes stories about the posters on view.

A cocktail reception will follow. **RSVP by Wednesday, September 28, to Leah Peavler at rsvp@mam.org or 414-224-3889.**

Coffee with the Director

Wed, Oct 19, 11 a.m.

Thurs, Oct 20, 6 p.m.

Open to President's Circle (\$2,500) level Members and above

Select from two opportunities to join Marcelle Polednik, PhD, Donna and Donald Baumgartner Director, for updates on the Museum's latest initiatives, followed by a curator-led tour highlighting new acquisitions and old favorites in the galleries. **RSVP by Wednesday, October 5, to Leah Peavler at rsvp@mam.org or 414-224-3889.**

Programs + Events

Always New: The Posters of Jules Chéret

Performance: Present Music's "French Connection"

Sun, Sept 11, 7:30 p.m.

The Museum extends its celebration of French arts and culture, tied to the current exhibition *Always New*, with this concert by Present Music in Windhover Hall. Enjoy Jean Cocteau's classic 1946 film *La Belle et la Bête* alongside live music composed by Philip Glass and the French crossover sensation Christophe Chassol.

Event tickets are required. As a Museum Member, you receive \$10 off general or preferred seating tickets with the code pmMAM at mam.org/chéret.

Focus Tours + Mini French Lessons

Sat, Sept 17, 2–3 p.m.

Sat, Oct 8, 2–3 p.m.

Grow your French language skills on a tour and mini-lesson through the *Always New* exhibition and Kohl's Haitian Gallery with Béatrice Armstrong, board member of the Milwaukee Art Museum's Fine Arts Society.

Expert Series: Artist Ericka Walker

Sat, Oct 1, 1 p.m.

Hear from the artist Ericka Walker about the Chéret-inspired poster she created for the *Always New* exhibition. Learn about how she referenced Chéret's aesthetics in her design and used his lithography techniques, including printing the poster on a similar press.

Expert Series sponsored by: Layton Art Collection Inc.

Gallery Talks

Sat, Oct 1, 11 a.m.

Thurs, Oct 13, noon

With Nikki Otten, associate curator of prints and drawings

Curator Nikki Otten and collectors Susee and James Wiechmann at the President's Circle Opening for *Always New: The Posters of Jules Chéret*. Thanks to PNC Financial Services for generously sponsoring this and other special events at the Museum.



POPULAR
FRENCH TONIC WINE
*Fertilizes and Refreshes Body + Blood
Restores Health and Vitality*

MURÉOLE
DU MIDI

LE CROTOY!

AMBÈS de

NAME TAG: [Name]

NAME TAG: [Name]

NAME TAG: [Name]

TOUCHÉ COIFFÉ
FOLIES-BERGÈRE
JEFFERSON
L'HOMME POISSON

EXICER
FILLE
ARQUE

SOCIÉTÉ
MAISON

DE BALLOU

AIW
NO

The

JULES

JAMES AN

NAME TAG: [Name]

Lectures

Annual Layton Lecture: *Convoy of Wounded: An Artist's Experience of War*

Thurs, Sept 29, 6:15–7:15 p.m.

Discover what it was like for Edouard Castres, who painted *Convoy of Wounded* (1870/71), and other artists to create their art during the Franco-Prussian War in this presentation by S. Hollis Clayson, professor emerita of art history at Northwestern University. A reception in the Museum Café will follow. Please register for the reception at mam.org/events.

Lecture sponsored by: Layton Art Collection Inc.
Reception sponsored by: Milwaukee Art Museum's Fine Arts Society

A Fresh Look at Bonnard: *Conserving Girl in Straw Hat*

Thurs, Nov 10, 6:15–7:15 p.m.

Learn about how the Museum cares for its collection and the surprises that can be uncovered along the way in this lecture by conservator Heather Galloway. In 2019, Galloway worked with the Museum to help safeguard Pierre Bonnard's painting *Girl in Straw Hat* (1903) for years to come.

Sponsored by: Milwaukee Art Museum's Fine Arts Society



Pierre Bonnard, *Girl in Straw Hat (Femme au chapeau rouge)* (detail), 1903.
Gift of Mr. and Mrs. Harry Lynde Bradley, M1958.13. Photo by John R. Glembin.
© Artists Rights Society (ARS), New York / ADAGP, Paris

Holistic Wellness

Slow Art Saturdays

Sat, Sept 10, Oct 8, Nov 12, 10:30 a.m.

Explore one of the Museum's works of art in depth during this one-hour program in the galleries that encourages presence and promotes well-being. Join Amy Kirschke, director of adult, docent, and school programs, in Windhover Hall for this engaging, shared experience.

Group Therapy: Black Space at MAM

Wed, 5:30 p.m.

The Museum is honored to partner with Black Space and provide a location for free group therapy for BIPOC community members. Together we can destigmatize mental wellness and normalize therapy in traditionally underserved communities. Sessions are free with registration at mam.org/events.

Sept 14: BIPOC Women's Group

Sept 21: BIPOC LGBTQIA Group

Sept 28: BIPOC Men's Group

Nov 30: BIPOC Women's Group

Dec 7: BIPOC LGBTQIA Group

Dec 14: BIPOC Men's Group



Discussion Group: Amazing Faiths Project: Faith as the Artist's Muse

Thurs, Oct 6, 5:30 p.m.

Come together at the Museum with people of different spiritual beliefs and philosophies for a conversation on art, faith, and gathering. The Amazing Faiths Project is a discussion series organized by the Interfaith Conference of Greater Milwaukee to create a more hospitable and connected society. Learn more about the project and its history at mam.org/events, where you can also register to attend. \$20/\$10 Member

Image courtesy of Kat Schleicher.

Museum Store



Annual Ornament

Designed by local artist
Lauren Marvel

\$24.00/\$21.60 Member

SmArt Shopping:
Shop the online store at
mam.org/store

Member Double Discount Days

Fri–Sun, Nov 25–27
Thurs, Dec 1–29

Pick up unique gifts and holiday décor—with a 20% discount (double your usual 10%!) and free gift wrapping. Shopping online? Enter promo code “doublediscount” at checkout.

Museum Store Sunday

Sun, Nov 27, 10 a.m.–5 p.m.

Shop one-of-a-kind items from guest vendors on this annual holiday highlighting the unique offerings of museum stores around the world and the role your purchases play in supporting your local museum.

Cyber Monday

Mon, Nov 28

Members receive free shipping on all online orders.



“Akira” Scarf

Made of eco-friendly
cupro cotton, fair trade

\$36.00/\$32.40 Member

Piano Wire Jewelry

Necklace \$76.00/\$68.40 Member

Bracelet \$56.00/\$50.40 Member

MILWAUKEE
ART
MUSEUM

700 NORTH ART MUSEUM DRIVE
MILWAUKEE, WI 53202

Non-Profit Org.
U.S. Postage Paid
Milwaukee, WI
Permit No. 374

Spread Joy

Gift a full year of
inspiration, creativity,
and entertainment with
a Museum membership.

mam.org/gift
414-224-3284

