

· THE ·
ART
AUCTION
2017

MILWAUKEE ART MUSEUM

CONTEMPORARY ART SOCIETY AND
THE MILWAUKEE ART MUSEUM PRESENT

· THE ·
ART
AUCTION
2017

The Contemporary Art Society Art Auction provides a rare opportunity to build your own collection with museum-caliber art that has been vetted by curators and a committee of seasoned art collectors.

With artwork selected from, among other sources, top-ranked galleries in New York, Chicago, Los Angeles, and Milwaukee, the auction brings together diverse and compelling works of contemporary art of various media to appeal to a range of collectors. Artists represented include Jean Dubuffet, Jane Hammond, Rashid Johnson, Ed Ruscha, and Stephen Shore, as well as a selection of emerging artists, such as Isca Greenfield-Sanders, Zanele Muholi, and Analia Saban.

The auction offers global contemporary art at an exceptional value while also benefiting the Milwaukee Art Museum's Collection. Tonight will result in nearly ninety exciting works of contemporary art entering the homes of local collectors, with a significant portion of the proceeds going to the Contemporary Art Society Acquisition and Program Fund.



Margaret Andera
Curator of Contemporary Art and Interim Chief Curator

SATURDAY, NOVEMBER 4, 2017
Proceeds benefit the Contemporary Art Society Acquisition Fund.

MILWAUKEE ART MUSEUM



AUCTION PROGRAM

- 5:30–7:30 PM** Cocktails and Hors d’Oeuvres
Bradley Family Gallery
- 7:00 PM** Silent Auction, Section One closes
Bradley Family Gallery
- 7:15 PM** Silent Auction, Section Two closes
Bradley Family Gallery
- 7:30 PM** Silent Auction, Section Three closes
Bradley Family Gallery
- 8:00–8:30 PM** Live Auction
Lubar Auditorium
Conducted by John P. Walcher
Treadway Toomey Auctions, Oak Park, IL
- 9:00 PM** Dinner and Dancing
Appeal for *Rainbow Bridge*
Windhover Hall
- 10:00 PM** Silent Auction, Section Four closes
Baumgartner Galleria

BIDDING INSTRUCTIONS

To place a phone bid (the night of the auction only), please call 414-224-3824.

Works of art for the Art Auction will be on view in the Bradley Family Gallery of the Milwaukee Art Museum from Thursday, October 26, through Saturday, November 4, 2017, during regular Museum hours.

The Milwaukee Art Museum will provide the pre-sale estimate on all property included in the auction. This estimate is an approximate value based, whenever possible, on comparable market values. Prices include costs incurred from transportation and framing, when applicable. Where a reserve exists, it will not exceed the range of estimates quoted.

Bids on silent auction items may be placed at the Museum throughout the preview period. Registration is required of anyone who will not be in attendance at the auction gala before any bids may be made on either the live or silent auction items.

On some silent auction pieces, a Patron Bid will be listed on the bid sheet. The first bid at the Patron level will win the piece and close the bidding on that work.

To bid by proxy or to place a sealed bid on live auction pieces, please contact aryn kresol at 414-224-3883 or cas.auction@mam.org.

CONDITIONS OF SALE

The property listed in the auction catalog will be offered and sold by the Milwaukee Art Museum (Museum) and/or the Contemporary Art Society (CAS). All property listed in the catalog will be offered by the Museum/CAS on the following terms and conditions, as amended by any posted notices or oral announcements during the sale.

1. The Museum/CAS assumes no risk, liability, or responsibility for the authenticity or the authorship of any property identified in this catalog (that is, the identity of the creator, period, culture, source, or origin, as the case may be, with which the creation of any property is identified herein).
2. All property is sold "AS IS" and the Museum/CAS makes no representations or warranties of any kind or any nature, expressed or implied, with respect to the property and in no event shall the Museum/CAS be responsible for the correctness of the catalog, nor be deemed to have made any representations or warranties of description, physical condition, quality, rarity, importance, genuineness, attribution, or provenance of the property. No statement in the catalog made at the sale or online, in any bill of sale or invoice, or elsewhere shall be deemed such a representation or warranty of any assumption of liability.
3. The Museum/CAS reserves the right to withdraw any property at any time before the actual sale.
4. Unless otherwise announced by the auctioneer at the time of the sale, all bids are per lot as identified in the catalog.
5. If the Museum/CAS determines that any opening bid is not commensurate with the same value of the article offered, the auctioneer may reject the same and withdraw the article from sale; and if, having acknowledged an opening bid, he decided that any advance thereafter is not of sufficient amount, he may reject the advance.
6. On the fall of the auctioneer's hammer, title to the offered lot or article will pass to the highest bidder, who thereupon (a) assumes full risk and responsibility therefore, (b) will sign a confirmation for the purchase thereof, and (c) will pay the full purchase price thereof.
7. The Museum/CAS reserves the right to reject a bid from any bidder. The highest bidder acknowledged by the auctioneer shall be the purchaser.
8. Each lot is offered subject to reserve, and the Museum/CAS may bid through its representative as agents to the consignor.
9. All terms of sale are payable by credit card or check to the Milwaukee Art Museum/CAS. All sales are subject to Wisconsin sales tax at 5.6% of final sale price unless the work is to be transported by a third party to another state. (That destination and transportation must be identified before the sale is finalized.) All property must be paid in full before it is removed from the Museum. Pieces may be picked up immediately following the auction or by appointment at the Museum on Monday, November 6, 2017, between noon and 5 p.m. The Milwaukee Art Museum will deliver large-scale objects within the Greater Milwaukee area at the convenience of the buyer. Call 414-224-3261 to schedule pickup or delivery.

THANK YOU

The Contemporary Art Society of the Milwaukee Art Museum Expresses Its Gratitude to the Following Donors and Consignors:

Anonymous
Tom Bamberger
Peter Barrickman and The Green Gallery
Donna and Donald Baumgartner
Miriam Böhm and Ratio 3
Barbara and Russell Bowman
Marco Breuer and Yossi Milo Gallery
Robert Burnier and Andrew Rafacz
Carolina Nitsch
James Cohan
Justin Cooper and Monique Meloche Gallery
Edwynn Houk Gallery
Tim and Sue Frautschi
Gemini G.E.L.
Isca Greenfield-Sanders,
Iva Gueorguieva and Ameringer | McEnergy | Yohe
Magalie Guerin and Corbett vs. Dempsey
Jane Hammond and Galerie Lelong
Ben Jackel and LA Louver Gallery
Dean Jensen
Rashid Johnson and Hauser & Wirth
Knoll
Anthony and Susan Krausen
Luhring Augustine
Marlborough Gallery
Kim McCarty and Morgan Lehman Gallery
The Mission Projects
Joanne Murphy
Ben Murray and Monique Meloche Gallery
James Nares
Opera Gallery
John Opera and Document Gallery
Joyce and Nick Pabst
Pace Prints
Katie Paterson and James Cohan Gallery

Thiago Rocha Pitta and Marianne Boesky Gallery
Portrait Society Gallery
Private collection
Charles Radtke
Richard Gray Gallery
John Riepenhoff and Marlborough Contemporary
Jim Rose and Tory Folliard Gallery
Alison Rossiter and Yossi Milo Gallery
Alison Saar and LA Louver Gallery
Salon 94
Sean Kelly
Senior & Shopmaker Gallery
Mindy Shapero and Marianne Boesky Gallery
Oyvind Solvang and Susan Lubar Solvang
Studio K.O.S. and Leymann Maupin
Nicole Teweles
Penelope Umbrico
Cornelius Volker and Hosfelt Gallery
Volume Gallery
Von Lintel Gallery
Woodward Gallery
Yancey Richardson

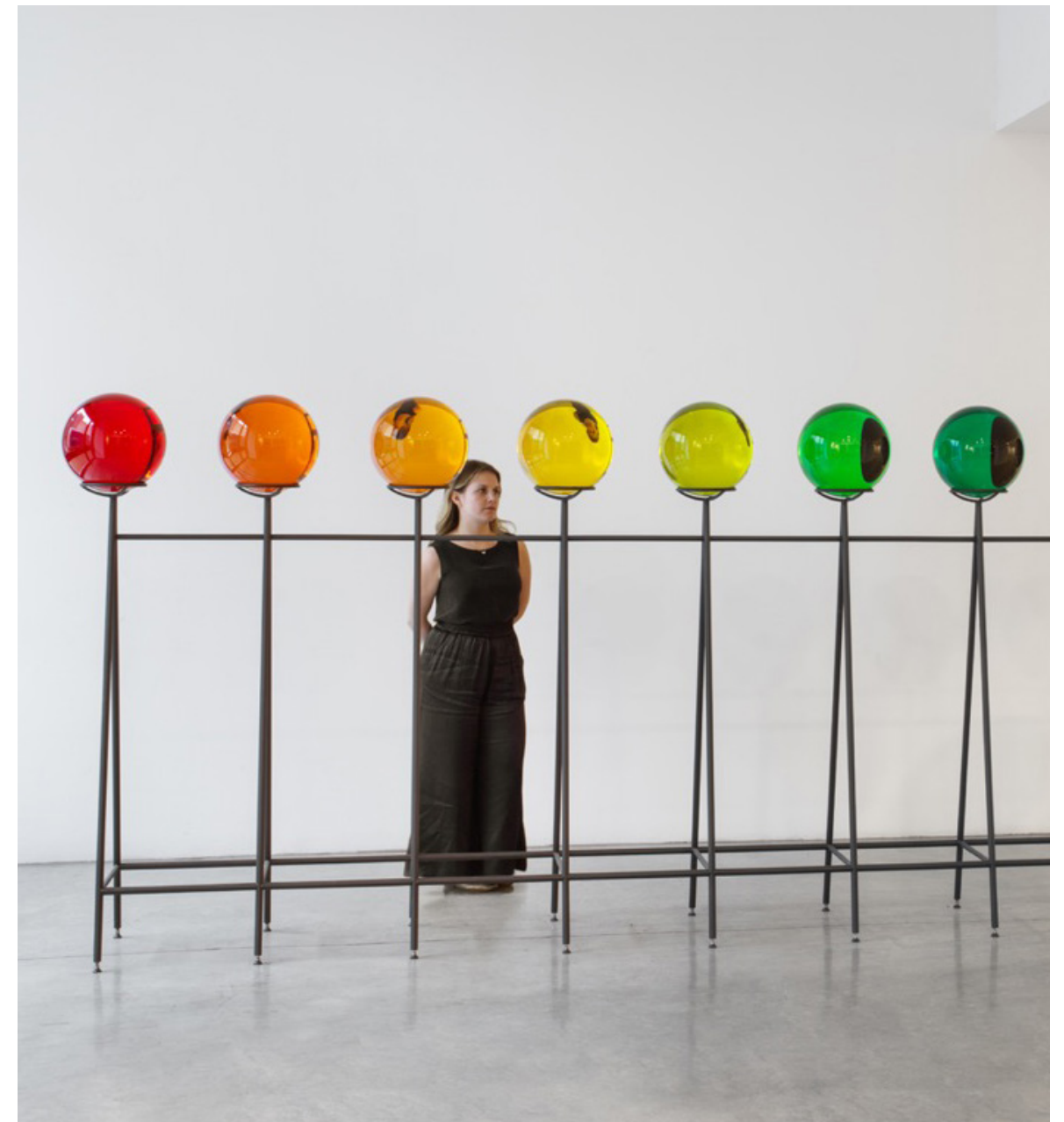
Milwaukee Art Museum Acquisition Appeal

Olafur Eliasson, *Rainbow Bridge*, 2017

12 partially painted and silvered glass spheres (12 colors, black) steel, paint (gray)

Courtesy of Tanya Bonakdar Gallery

The Contemporary Art Society has committed to acquiring this work for the Museum's contemporary art collection—and aims to raise the funds during the Art Auction. Help the Museum purchase this work. Please make a donation during the appeal for *Rainbow Bridge*. The Contemporary Art Society has generously agreed to provide the remaining funds needed, following the gala.



SILENT AUCTION

SECTION ONE

BRADLEY FAMILY GALLERY | CLOSES AT 7:00 P.M.



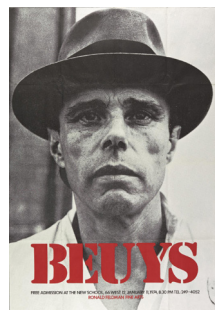
S1-1
TOM BAMBERGER
American, b. 1948
Poppy, 2017
Inkjet print from digital file
23 ½ × 30 ⅝ inches
The artist and Portrait Society Gallery, Milwaukee
Estimate: \$550–700



S1-2
LOIS BIELEFELD
American, b. 1978
Ben, 2014
Archival digital print, ed. 2/10
55 × 40 inches
The artist and Portrait Society Gallery, Milwaukee
Estimate: \$900–1,000



S1-3
CLAUDIO BRAVO
Chilean, 1936–2011
Ceres (Sepia), 1998
Lithograph, ed. of 30
38 ¼ × 29 ½ inches
Marlborough Gallery, New York
Estimate: \$2,500–3,000



S1-4
Vintage Joseph Beuys Exhibition Poster, 1974
Exhibition at the New School, New York
Produced by Ronald Feldman Fine Art Gallery
56 × 38 inches
Marianne and Sheldon Lubar
Estimate: \$1,200–1,700



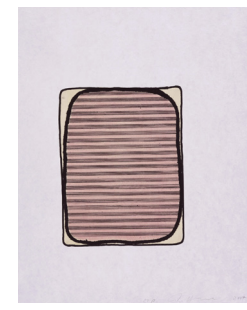
S1-5
ROBERT BURNIER
American, b. 1969
Šalo (CFD/4), 2017
Acrylic on aluminum
20 × 14 × 4 inches
The artist and Andrew Rafacz, Chicago
Estimate: \$4,500–5,000



S1-6
HELEN FRANKENTHALER
American, 1928–2011
Untitled, ca. 1965
Color lithograph on paper, ed. 2/100
22 ¼ × 16 ¾ inches
Nicole Teweles
Estimate: \$2,500–3,000



S1-7
MAGALIE GUERIN
Canadian, b. 1973
Untitled, 2017
Oil on canvas on panel
20 × 16 inches
The artist and Corbett vs. Dempsey, Chicago
Estimate: \$4,500–5,500

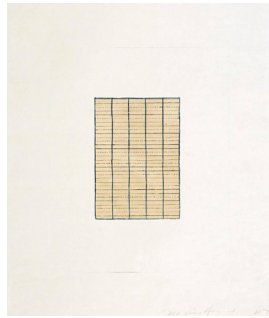


S1-8
ANN HAMILTON
American, b. 1956
script m, 2008
Four-color lithograph with chine collé, ed. of 35
23 × 18 ¼ inches
Gemini G.E.L., New York
Estimate: \$900–1,150

SILENT AUCTION

SECTION ONE

BRADLEY FAMILY GALLERY | CLOSES AT 7:00 P.M.



S1-9
ANN HAMILTON
American, b. 1956
script q, 2008
Four-color etching with chine collé, ed. of 35
21 × 18 inches
Gemini G.E.L., New York
Estimate: \$900–1,150



S1-10
ROBERT LONGO
American, b. 1953
Gretchen, 1982
Lithograph with embossing
30 × 15 ¼ inches
Oyvind Solvang and Susan Lubar Solvang
Estimate: \$3,500–4,500



S1-11
CHRISTY MATSON
American, b. 1979
Plot #05, 2014
Cotton, wool, Tencel, and indigo
27 × 37 inches
Volume Gallery, Chicago
Estimate: \$3,250–4,000



S1-12
TODD MROZINSKI
American, b. 1974
Pine Tree, 2016
Graphite on paper
41 × 68 inches
The artist and Portrait Society Gallery, Milwaukee
Estimate: \$3,000–3,500



S1-13
JONATHAN NESCI
American, b. 1981
100 Variations, 2014
Mirror-polished aluminum, ed. 62/100
28 × 16 × 16 inches
Volume Gallery, Chicago
Estimate: \$3,000–3,500



S1-14
GLADYS NILSSON
American, b. 1940
Sites Unscene from the Wisconsin Sesquicentennial Portfolio, 2001
Etching, ed. 109/115
22 ⅝ × 31 ¼ inches
Tim and Sue Frautschi
Estimate: \$1,500–1,800



S1-15
NICHOLAS NIXON
American, b. 1947
Gum Tree, Kentucky, 1982
Gelatin silver contact print
7 ½ × 9 ½ inches
Dean Jensen
Estimate: \$3,000–4,000



S1-16
CLAES OLDENBURG
American, b. Sweden, 1929
Nose Tunnel, 1968
Silk handkerchief
19 × 19 inches
Anthony and Susan Krausen
Estimate: \$2,500–3,000

SILENT AUCTION

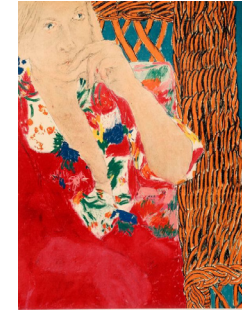
SECTION ONE

BRADLEY FAMILY GALLERY | CLOSES AT 7:00 P.M.



S1-17
ROSEMARY OLLISON
American, b. 1942
Untitled, from the series *Hot Mamas*, 2017
Ink and glitter on paper
29 ¼ × 22 ¼ inches
The artist and Portrait Society Gallery, Milwaukee
Estimate: \$1,000–1,200

S1-21
GEORGE SEGAL
American, 1924–2000
Untitled, 1970
Lithograph, ed. of 100
30 × 22 inches
Joanne Murphy
Estimate: \$1,500–2,000



S1-18
PHILLIP PEARLSTEIN
American, b. 1924
Girl on a Striped Rug, 1971–72
Lithograph printed in brown, ed. of 70
21 × 24 inches
Anonymous
Estimate: \$2,500–3,000

S1-22
GEORGE SEGAL
American, 1924–2000
Untitled, 1970
Lithograph, ed. of 100
30 × 22 inches
Joanne Murphy
Estimate: \$1,500–2,000



S1-19
RAYMOND PETTIBON
American, b. 1957
Untitled (Inside the Bookcase), 2007
Lithograph, ed. of 175, 12 PP
14 ½ × 20 ½ inches
Marlborough Gallery, New York
Estimate: \$3,250–3,750

S1-23
CAROL SUMMERS
American, b. 1925
India, 1994
Woodcut, ed. of 75
44 ½ × 32 inches
Joyce and Nick Pabst
Estimate: \$2,500–3,000



S1-20
JIM ROSE
American, b. 1966
Two Drawer Starburst Table, 2017
Hot rolled and found steel
34 × 42 × 15 inches
The artist and Tory Folliard Gallery, Milwaukee
Estimate: \$2,500–2,800

S1-24
SONJA THOMSEN
American, b. 1978
Surfaces, 2007
Suite of 9 chromogenic prints
12 × 12 inches each
Dean Jensen
Estimate: \$4,500–5,500

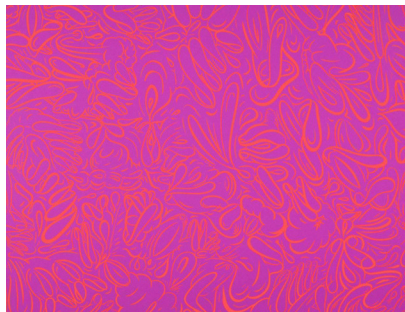


SILENT AUCTION

END SECTION ONE



S1-25
MELANIE WILLHIDE
American, b. 1975
The Act and the Result of the Action, 2014
Archival pigment print, ed. of 5
26 × 30 inches
Von Lintel Gallery, Los Angeles
Estimate: \$3,750-4,500



S1-26
SUE WILLIAMS
American, b. 1954
The Wiggleness, 2004
Silkscreen, ed. of 35
35 × 45 ½ inches
Dean Jensen
Estimate: \$3,500-4,500



S1-27
GARY WINOGRAND
American, 1928-1984
Majorettes in a street parade,
from the series *Women Are Beautiful, 1974*
Gelatin silver print
8 ¾ × 13 ⅙ inches
Dean Jensen
Estimate: \$3,500-4,500

SECTION TWO

BRADLEY FAMILY GALLERY | CLOSES AT 7:15 P.M.

S2-1
GHADA AMER AND REZA FARKHONDEH
Egyptian, b. 1963; Iranian, b. 1963
Kiss Cross, 2006
Color lithograph with hand-sewn elements, ed. 5/25
24 × 30 inches
Barbara and Russell Bowman
Estimate: \$3,500-4,500



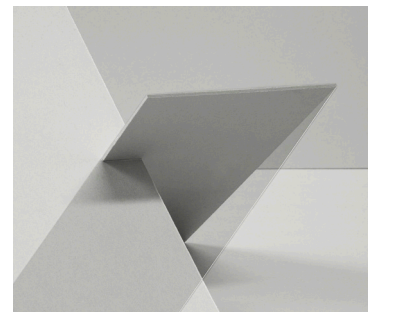
S2-2
DONALD BAECHLER
American, b. 1956
6 Flowers, 2010
Suite of six stenciled handmade papers, ed. of 49
13 × 10 inches each (varies)
Pace Prints, New York
Estimate: \$8,000-9,500



S2-3
TOM BAMBERGER
American, b. 1948
Fall 2, 2017
Inkjet print from digital file
29 ½ × 59 inches
The artist and Portrait Society Gallery, Milwaukee
Estimate: \$11,000-14,000



S2-4
MIRIAM BÖHM
German, b. 1972
Or The Like III, 2016
Pigment archival print, ed. 1/4 with 2 APs
26 × 30 inches
The artist and Ratio 3, San Francisco
Estimate: \$7,500-8,500



SILENT AUCTION

SECTION TWO

BRADLEY FAMILY GALLERY | CLOSES AT 7:15 P.M.



S2-5
UMBERTO CICERI
Italian, b. 1961
Indigo Dance N532, 2013
Lenticular print
19 ⁷/₁₀ × 19 ⁷/₁₀ inches
Opera Gallery, New York
Estimate: \$9,000–11,000



S2-9
IVA GUEORGUIEVA
Bulgarian, b. 1974
Their Own Aerial Navigation, 2015
Acrylic, collage, etching, and oil stick on canvas
20 × 16 inches
The artist and Ameringer | McEnergy | Yohe, New York
Estimate: \$7,000–8,500



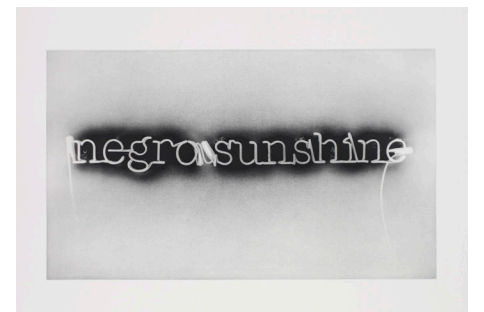
S2-6
JUSTIN COOPER
American, b. 1976
Spreadsheet 2, 2016
Pen, marker, colored pencil, and graphite on paper
60 × 50 inches
The artist and Monique Meloche Gallery, Chicago
Estimate: \$7,500–9,000



S2-10
ALEX KATZ
American, b. 1927
Blue Coat (Vincent), 1993
Aquatint, ed. of 30, AP 4/12
37 × 23 ³/₄ inches
Joyce and Nick Pabst
Estimate: \$5,000–6,500



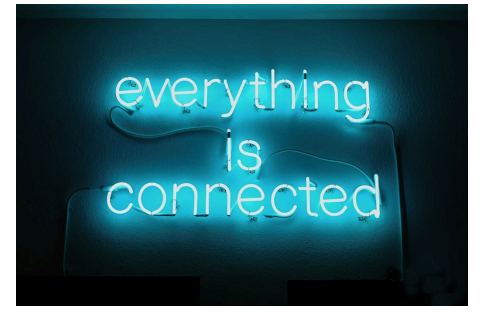
S2-7
SHARON CORE
American, b. 1965
Untitled #1, from the series *Understory*, 2014
Archival pigment print, ed. of 7
34 × 30 inches
Yancey Richardson, New York
Estimate: \$11,000–13,000



S2-11
GLENN LIGON
American, b. 1960
Warm Broad Glow (reversed), 2007
Photogravure aquatint, ed. of 35
24 ¹/₂ × 35 ¹/₂ inches
Anthony and Susan Krausen
Estimate: \$8,000–11,000



S2-8
ISCA GREENFIELD-SANDERS
American, b. 1978
West Coast, 2015
Mixed media, watercolor with colored pencil
17 × 17 inches
The artist and Ameringer | McEnergy | Yohe, New York
Estimate: \$8,500–10,000



S2-12
PETER LIVERSIDGE
British, b. 1973
everything is connected, 2015
Veep Green neon, transformer
19 ⁵/₁₆ × 32 ¹³/₁₆ inches
Sean Kelly, New York
Estimate: \$11,000–14,000

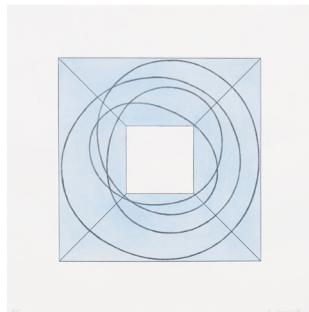
SILENT AUCTION

SECTION TWO

BRADLEY FAMILY GALLERY | CLOSES AT 7:15 P.M.



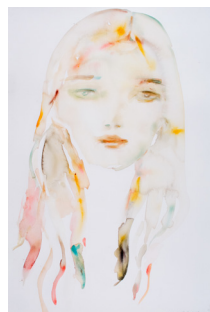
S2-13
MATT MAGEE
American, b. 1961
Hanger, 2017
Detergent bottles, wire, steel, acrylic base
21 ½ × 11 × 1 inches
The artist and The Mission Projects, Chicago
Estimate: \$1,500–1,800



S2-14
ROBERT MANGOLD
American, b. 1937
Framed Square with Open Center B, 2013
Soft-ground and aquatint etching, ed. of 40
27 ¼ × 27 inches
Pace Prints, New York
Estimate: \$7,500–9,000



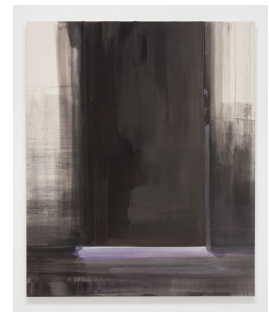
S2-15
AGNES MARTIN
American, 1912–2004
Untitled, 1973
Screenprint on Japanese paper, ed. of 50
12 × 12 inches
Carolina Nitsch, New York
Estimate: \$7,500–8,500



S2-16
KIM MCCARTY
American, b. 1956
Long Hair—Red, 2015
Watercolor on paper
31 × 21 inches
The artist and Morgan Lehman Gallery, New York
Estimate: \$6,500–8,000



S2-17
MARILYN MINTER
American, b. 1948
Spray On #4, 2016
UV-cured acrylic polymer printed on aluminum, mounted on aluminum tube bracing, ed. of 5, 2 AP, 1 HC
30 × 24 × 1 inches
Carolina Nitsch, New York
Estimate: \$9,500–12,000



S2-18
BEN MURRAY
American, b. 1977
EXT./INT. DRIVING-ROOM—NIGHT, 2015–16
Oil on canvas
84 × 78 inches
The artist and Monique Meloche Gallery, Chicago
Estimate: \$9,000–11,000



S2-19
KENJI NAKAYAMA
Japanese, b. 1979
Boston Train Yard, 2007
Enamel, spray paint, and stencil on canvas
34 × 28 inches
The artist and Woodward Gallery, New York
Estimate: \$8,500–9,500

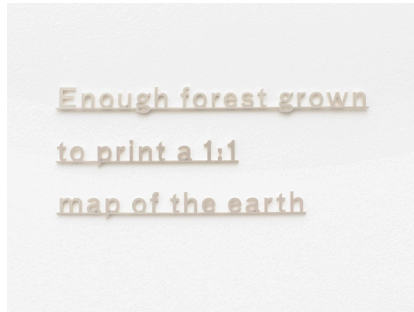


S2-20
LAURA OWENS
American, b. 1970
Untitled (Moon), 2003
Hand-colored etching, aquatint, ed. of 35
33 × 29 ¼ inches
Senior & Shopmaker Gallery, New York
Estimate: \$6,500–8,000

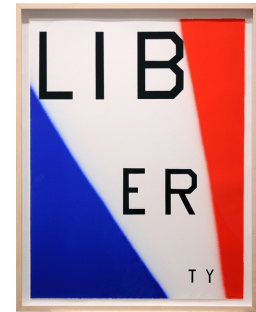
SILENT AUCTION

SECTION TWO

BRADLEY FAMILY GALLERY | CLOSES AT 7:15 P.M.



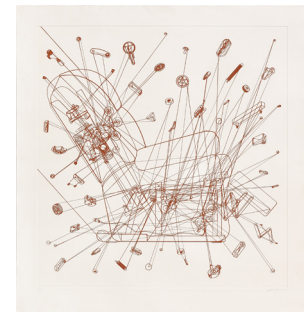
S2-21
KATIE PATERSON
Scottish, b. 1981
Enough forest grown to print a 1:1 map of earth, 2016
Sterling silver, ed. 1/3
4 3/8 × 10 1/2 × 3/16 inches
The artist and James Cohan Gallery, New York
Estimate: \$5,500–7,000



S2-25
ED RUSCHA
American, b. 1937
Liberty, 2011
Three-color lithograph with screenprint
26 × 20 inches
Richard Gray Gallery, Chicago
Estimate: \$7,000–8,500



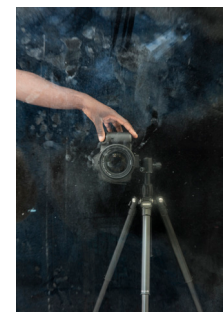
S2-22
RICHARD PRINCE
American, b. 1949
The Playmate, 2012
Black-and-white photograph on Kodak Endura paper, ed. of 5
14 × 11 inches
Carolina Nitsch, New York
Estimate: \$6,000–7,000



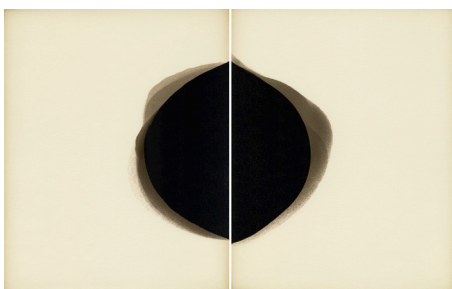
S2-26
ANALIA SABAN
Argentine, b. 1980
Massage Recliner (One-Continuous Line), 2016
One-color aquatint, ed. of 18
54 1/2 × 51 1/4 inches
Gemini G.E.L., New York
Estimate: \$7,000–8,500



S2-23
CHARLES RADTKE
American, b. 1964
Blinding Light of Heaven, 2017
Belize mahogany, tiger maple, copper gilding, and pink ivory handles
30 1/2 × 22 × 13 inches
The artist
Estimate: \$8,500–10,500



S2-27
PAUL MPAGI SEPUYA
American, b. 1982
Darkroom Mirror Study (OX5A1525), 2017
Archival pigment print, ed. of 5
51 × 34 inches
Yancey Richardson, New York
Estimate: \$7,500–9,000



S2-24
ALISON ROSSITER
American, b. 1953
Untitled from the series Pools Agfa Cykora, expired July 1940, processed 2017 (#1), 2017
Two gelatin silver prints
13 1/4 × 19 3/8 inches
The artist and Yossi Milo Gallery, New York
Estimate: \$9,000–11,500



S2-28
MINDY SHAPERO
American, b. 1974
Square vision (yellow, black, gold), 2011
Acrylic, spray paint, and gold leaf on paper
48 × 48 inches
The artist and Marianne Boesky Gallery, New York
Estimate: \$10,000–12,000

SILENT AUCTION

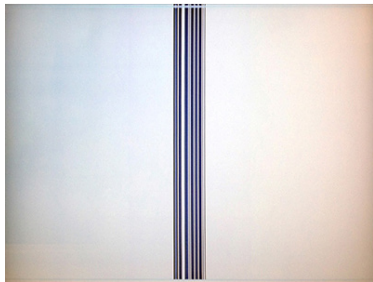
END SECTION TWO



S2-29
LAURIE SIMMONS
American, b. 1949
House underneath (reclining), 1998
Duraflex print
60 × 40 inches
Donna and Donald Baumgartner
Estimate: \$12,000–14,000



S2-30
KIKI SMITH
American, b. 1954
EUROPA, 2001–05
Dimensional four-color photogravure, ed. of 25
21 × 29 ¼ inches
Carolina Nitsch, New York
Estimate: \$7,500–9,000



S2-31
PENELOPE UMBRICO
American, b. 1957
vizio_5941-c-L-C.jpg, from the series *Broken Sets (eBay) 3*, 2014
Chromogenic print
30 × 40 inches
The artist
Estimate: \$6,500–8,000



S2-32
CORNELIUS VOLKER
German, b. 1965
Newspaper, 2012
Oil on paper
27 ½ × 39 ⅜ inches
The artist and Hosfelt Gallery, San Francisco
Estimate: \$7,000–8,500

SECTION THREE

BRADLEY FAMILY GALLERY | CLOSSES AT 7:30 P.M.



S3-1
JANINE ANTONI
American, b. 1964
Coddle, 1999
Cibachrome print and hand-carved frame, ed. of 10 with 3 APs
21 ½ × 16 inches
Luhring Augustine, New York
Estimate: \$24,000–28,000



S3-2
MARCO BREUER
German, b. 1966
Untitled (C-991), 2010
Chromogenic paper, exposed/embossed/scraped
17 ⅝ × 14 inches
The artist and Yossi Milo Gallery, New York
Estimate: \$11,000–14,000



S3-3
MICHELLE GRABNER
American, b. 1962
Untitled, 2002
Flashe on canvas
21 × 18 × 1 ½ inches
Private collection
Estimate: \$12,000–15,000



S3-4
RICHARD HAMBLETON
American, b. Canada 1954
Cat Stack, 2006
Three screenprints on Rives BFK paper, ed. 17/20
40 × 26 inches
Woodward Gallery, New York
Estimate: \$10,000–14,000

SILENT AUCTION

SECTION THREE

BRADLEY FAMILY GALLERY | CLOSES AT 7:30 P.M.



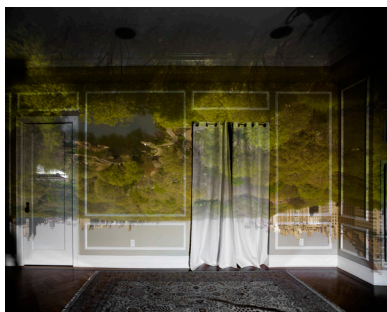
S3-5
BEN JACKEL
American, b. 1977
Shadow, 2014
Mahogany, graphite, and ebony
5 × 45 × 16 inches
The artist and LA Louver Gallery, Los Angeles
Estimate: \$35,000–38,000



S3-6
RASHID JOHNSON
American, b. 1977
Untitled (Anxious Drawing), 2017
Oil on cotton rag
38 ½ × 50 inches
The artist and Hauser & Wirth, New York
Estimate: \$32,000–38,000



S3-7
JEFF KOONS
American, b. 1954
Balloon Dog, 2015
Porcelain, ed. of 2,300
10 ½ × 10 ½ × 5 inches
Opera Gallery, New York
Estimate: \$10,000–12,000



S3-8
ABELARDO MORELL
American, b. 1948
Camera Obscura: View of Central Park Looking North, Spring, 2010
Archival pigment print, ed. of 10
31 ¼ × 36 ¾ inches
Edwynn Houk Gallery, New York
Estimate: \$15,000–18,000



S3-9
YUKULTJI NAPANGATI
Australian, b. 1970
Untitled (YN 11), 2014
Acrylic on linen
35 ¾ × 24 ⅛ inches
Salon 94, New York
Estimate: \$20,000–24,000



S3-10
THIAGO ROCHA PITTA
Brazilian, b. 1980
seascape with cyanobacteria, 2017
Fresco
28 × 35 ⅞ inches
The artist and Marianne Boesky Gallery, New York
Estimate: \$17,000–20,000



S3-11
TIM ROLLINS and K.O.S.
American, b. 1955
Invisible Man (after Ralph Ellison), 2012
Matte acrylic and book pages on canvas
24 × 24 inches
Studio K.O.S. and Lehmann Maupin, New York and Hong Kong
Estimate: \$18,000–22,000



S3-12
ALISON SAAR
American, b. 1956
Quagmire Quiver, 2015
Acrylic, gesso, and charcoal on found and dyed denim, sugar sacks, and linens
47 × 24 inches
The artist and LA Louver Gallery, Los Angeles
Estimate: \$15,000–20,000

SILENT AUCTION

END SECTION THREE



S3-13
STEPHEN SHORE
American, b. 1947
U.S. 1, Arundel, Maine, July 17, 1974/80
Chromogenic contact print
8 × 10 inches
Edwynn Houk Gallery, New York
Estimate: \$30,000–36,000



S3-14
FRED TOMASELLI
American, b. 1956
Wednesday, January 11, 2017, 2017
Inkjet, acrylic, and collage on paper
43 7/8 × 56 7/8 inches
James Cohan, New York
Estimate: \$65,000–70,000



LIVE AUCTION

LUBAR AUDITORIUM | 8:00-8:30 PM



L-01

ROBERT RAUSCHENBERG

American, 1925–2008

Guggenheim Retrospective Plates (set of 6), 1997

Porcelain, limited edition
Diameter: 10 ½ inches each
Woodward Gallery, New York
Estimate: \$2,000–3,000

Though American artist Robert Rauschenberg has long been celebrated for his groundbreaking contributions to twentieth-century painting, he had an abiding interest in photography, which has only recently been emphasized. Rauschenberg often incorporated photographs into the layers of paint and objects that covered his canvases, and he also produced numerous photographic collages and stand-alone prints. This set of plates, created at the time of Rauschenberg's largest retrospective, at the Guggenheim Museum in 1997, features six of the artist's photographs printed on porcelain. The winner of this lot will have the option of having their dinner served on these special plates immediately following the live auction.

L-02

ALEX KATZ

American, b. 1927

Nicole, 2016

Color woodblock print, ed. of 60
31 ½ × 71 inches
Senior & Shopmaker, New York
Estimate: \$13,000–15,000

New York-based painter and printmaker Alex Katz is one of the most recognized and widely exhibited artists of his generation. He is best known for his boldly simplified portraits and landscapes that straddle the line between abstraction and figuration. This image is based on a 2014 painting that is in the collection of the Metropolitan Museum of Art, in New York, and features a "widescreen" composition, in which the figure occupies the margin. Katz's work is included in most contemporary art museum collections and is represented in the Museum's Collection by several prints and paintings, including *Sunny #4*, the beloved large-scale painting of a dog.

L-03

CHAKAIA BOOKER

American, b. 1953

Impeding Encounter, 2008

Handmade Abaca paper pulp over wire armature, ed. of 20
28 × 28 × 11 inches
Marlborough Gallery, New York
Estimate: \$5,500–7,000

Chakaia Booker is an internationally acclaimed sculptor who is known for her powerful pieces created from discarded truck, car, and bicycle tires. The sculptures have a textile-like quality whose anthropomorphic forms Booker employs to comment on themes ranging from black identity to urban ecology. The sculpture here references her tire sculptures but is made from abaca, one of the strongest fibers in the world. Booker burst onto the art scene at the Whitney Biennial in 2000. Exhibitions include the National Museum of Women in the Arts, in Washington, DC, and at the Milwaukee Art Museum, and has work in the collections of the Metropolitan Museum of Art and the Studio Museum in Harlem, in New York.

L-04

JOHN OPERA

American, b. 1975

Oval With Grid (blue), 2017

Cyanotype, acrylic and vinyl paint, on canvas in artist's frame
46 × 36 inches
The artist and Document Gallery, Chicago
Estimate: \$11,000–14,000

Born in upstate New York, Chicago-based artist John Opera combines photographs and painting to explore the limits of both mediums. This work is among his most recent experiments with the cyanotype process. After placing fluorescent light tubes on the photographic surface, giving rise to the areas of dark and light blue cyan, Opera layered the print with paint. The resulting object does not fit neatly into the history of either painting or photography. Opera earned his MFA from the School of the Art Institute of Chicago, in 2005, and his work is in the collections of the Museum of Contemporary Art and DePaul Art Museum, in Chicago, and numerous corporate collections. His work has been reviewed in *Artforum* and the *New Yorker*.

LIVE AUCTION

LUBAR AUDITORIUM | 8:00–8:30 PM



L-05

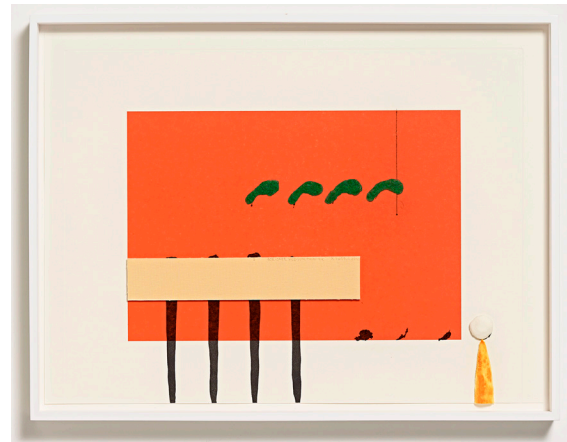
DAVID ADJAYE

Ghanaian-British, b. 1966

Washington Skeleton™ Copper Side Chairs
(set of two), 2013

Copper-plated aluminum
18 × 20 ¼ × 32 ½ inches
Knoll, New York
Estimate: \$4,000–5,000

Architect David Adjaye is widely regarded as one of the most significant architects working today. He established his studio, Adjaye Associates, in 2000, and has offices in New York and London. Adjaye designed the National Museum of African American History and Culture, in Washington, DC, which opened in 2016 to great acclaim; this pair of chairs comes from a collection of furniture he developed alongside that project. Produced with American retailer Knoll, the collection is the architect's first foray into furniture design. The copper-plated chairs evoke the national museum's metal lattice façade while demonstrating Adjaye's interest in dynamic structural balance on an intimate scale.



L-06

RICHARD TUTTLE

American, b. 1941

For Case Hudson, Printer, 2013

Drypoint and woodblock with plastic and paper construction, series of 43
19 ¼ × 25 ¼ × 2 inches
Gemini G.E.L., New York
Estimate: \$5,000–6,500

One of the most significant artists working today, Richard Tuttle first came to prominence in the 1960s, with work comprised of textiles, paper, wire, and rope—everyday materials that remain the cornerstone of his practice. Tuttle's artworks explore line, volume, color, texture, shape, and form as they blur the divisions between painting, sculpture, assemblage, and drawing. An accomplished printmaker, Tuttle makes his process and materials visible. His work has been exhibited in major museums worldwide and is included in the collections of the Centre Georges Pompidou, in Paris, the Tate Modern, in London, and the Whitney Museum of American Art and the Metropolitan Museum of Art, in New York.



L-07

JAMES NARES

English, b. 1953

Studio Visit with the Artist (up to six people)

Date and time to be mutually agreed upon
Cost does not include travel or accommodations
Estimate: Priceless

The London-born, New York-based artist James Nares works across mediums, from painting to video, to address movement, rhythm, and repetition. This studio visit with Nares and Marcelle Polednik, Director of the Museum, promises to provide a fascinating peek into the artist's practice. Nares, whose hypnotic film and video work was shown at the Museum this year in *James Nares: In the Street*, in the Herzfeld Center for Photography and Media Arts, will be the subject of a retrospective here in the summer of 2019. His work is included in the collections of the Metropolitan Museum of Art, Museum of Modern Art, and the Whitney Museum of American Art in New York, and Albright-Knox Gallery, in Buffalo, New York.



L-08

JANE HAMMOND

American, b. 1950

Alcohol, Tobacco and Firearms, 2016

Acrylic paint on mica over Plexiglas with silver, gold, copper, and palladium leaf
35 × 51 × 3 ¾ inches
The artist and Galerie Lelong, New York
Estimate: \$48,000–55,000

Jane Hammond's collages combine painting, photography, and mixed media. She incorporates found images—from the past and present, history and fiction—to explore how recontextualizing an image changes its meaning. She draws influence from notable films and photographic works, creating vignettes of American culture laced with nostalgia and whimsy. Hammond's works can be found in numerous museum collections, including at the Museum of Modern Art, Whitney Museum of American Art, and Metropolitan Museum of Art, in New York; National Gallery of Art, in Washington, DC; Walker Art Center, in Minneapolis; Museum of Contemporary Art, Chicago; and the Milwaukee Art Museum.

LIVE AUCTION

LUBAR AUDITORIUM | 8:00-8:30 PM



L-09 (Collaboration)

JOHN RIEPENHOFF

American, b. 1982

Handler, 2015

Wood, wire, cloth, shoes, fiberglass, and clamp

50 × 14 × 16 inches

The artist and Marlborough Contemporary, New York

PETER BARRICKMAN

American, b. 1971

Public Entrance, 2017

Acrylic, Flashe, and colored pencil on canvas

40 × 32 inches

The artist and The Green Gallery, Milwaukee

Estimate: \$16,000-23,000

John Riepenhoff is a Milwaukee-based artist and co-owner of The Green Gallery. His work was shown in the 2017 Whitney Biennial, including versions of the collaborative sculpture here. *Handler* features legs outfitted in Riepenhoff's pants and shoes, holding a large-scale painting by Peter Barrickman. The unconventional easel simulates the perspective of the art handler, making visible one of the unseen professionals integral to presenting an exhibition. By ascribing equal value to handler and artist, the artwork renders the social boundaries within the art community permeable. Barrickman is also based in Milwaukee and is represented by Riepenhoff's gallery, making literal the idea of a gallerist supporting his artists' work. Barrickman's paintings have been featured in solo and group exhibitions in New York, Dallas, Los Angeles, and Chicago.



L-10

ZANELE MUHOLI

South African, b. 1972

Palesa, Parktown, 2016

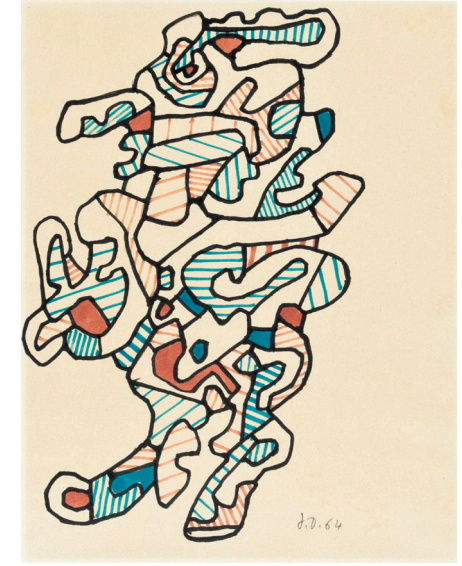
Gelatin silver print, ed. of 8

19 7/10 × 14 1/2 inches

Yancey Richardson, New York

Estimate: \$12,000-14,000

Internationally renowned South African photographer Zanele Muholi creates "visual activism" to promote awareness of black LGBTI in South Africa and beyond. In her series *Somnyama Ngonyama (Hail, the Dark Lioness)*, Muholi riffs on fashion photography, presenting herself in costume; the costumes are made of materials from the cities she has traveled to as the result of her fame. Muholi's work was recently acquired by the Milwaukee Art Museum and is in the collections of the Art Institute of Chicago; Centre Pompidou; Museum of Modern Art, New York; Tate Modern; and San Francisco Museum of Modern Art, among others. Her work has been shown at Documenta 13, the 55th Venice Biennale, and the 29th São Paulo Biennial.



L-11

JEAN DUBUFFET

French, 1901-1985

Personnage XXII, 1964

Ink on paper

10 1/2 × 8 3/10 inches

Opera Gallery, New York

Estimate: \$54,000-\$58,000

Arguably the most radical artist working in postwar France, Jean Dubuffet abandoned the facile painterly quality that predominated at the time and instead sought inspiration from the drawings of children and psychiatric patients, graffiti, and folk art. He collected such works and aspired to emulate their raw power, creating a style he called *Art Brut* (raw art). He explored new subjects and techniques and experimented with nontraditional tools. Here, the artist's line is childlike but charged with a dynamic, graphic quality. Dubuffet's work has been shown at museums worldwide and is included in every major museum collection, including the Milwaukee Art Museum's.

THE ART AUCTION

AUCTION CHAIRS

Honorary Auction Chairs

Donna and Donald Baumgartner

Art Selection Chairs

Flavius Cucu
Christine Symchych

Event Chairs

Jennifer and Joe Kresl
Margie Freeman and Peter Kudlata

AUCTION COMMITTEES

Art Selection Committee

Donna and Donald Baumgartner
Susan Frautschi
Tony Krausen
Tom Lacy
Joanne Murphy
Andy Nunemaker
Miriam Van de Sype
Kathy Yuille

Event Committee

Jessica Albrecht
Pamela Shovers

Art Auction Administrator

aryn kresol

Museum Event Staff

Krista Renfrew
Molly Canan
Jennifer Kobe
Molly Mattefs

Art Advisors

Marcelle Polednik, PhD
Margaret Andera
Lisa Sutcliffe

Table Captain Chair

Jessica Albrecht

Preview Party Hosts

Donna and Donald Baumgartner

Kickoff Party Hosts

Reva Shovers
Christine Symchych

Caterer

Café Calatrava

CAS ART AUCTION CHAIRS BY YEAR

1986

Reva Shovers
Karen Drummond

1994

Anthony Krausen

1996

Donald Baumgartner

1988

Reva Shovers
Karen Drummond

1998

Donald Baumgartner

1990

Marianne Lubar

2002

Dorothy Stadler

1992

Marianne Lubar

2004

Dorothy Stadler

2007

Anthony Krausen
Kathy Yuille

2010

Joanne Murphy
Andy Nunemaker

2012

Joanne Murphy
Kathy Yuille

2017

Flavius Cucu
Christine Symchych

THANK YOU

On behalf of the Auction Committee and members of the Contemporary Art Society, we would like to express our thanks to the entire staff of the Milwaukee Art Museum. Without their constant support and encouragement, this important event would not take place.

In addition, we would like to thank the many donors, consignors, buyers, and attendees for not only their generosity but also their participation in this event, all of which permits CAS to purchase acquisitions of contemporary art for the Museum.

Lastly, we would like to express our appreciation to Marcelle Polednik, Margaret Andera, and Lisa Sutcliffe, for not only their time and direction but also their help with the many galleries we visited, securing art for the auction.

Flavius Cucu and Christine Symchych
Art Selection Co-Chairs

Margie Freeman and Peter Kudlata
Jennifer and Joe Kresl
Event Co-Chairs

On behalf of the Museum, I would like to thank all the hard-working members of the Auction Committee for making the Thirteenth Benefit Art Auction a truly exceptional event. Without them, the auction would not be possible.

This fundraiser not only brings great works of art to the Milwaukee community but also helps support the contemporary acquisitions and programming at the Museum—we are most grateful for this patronage.

Margaret Andera
*Curator of Contemporary Art
and Interim Chief Curator*

Bid Sheet Sponsor



Photographs of Select Artwork by

John R. Glembin



