

MILWAUKEE ART MUSEUM

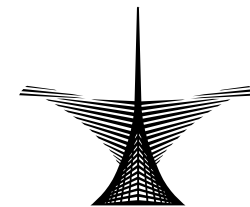
Jan Lievens

Out of Rembrandt's Shadow

Scavenger

Hunt

Grades K–6



MILWAUKEE ART MUSEUM

700 NORTH ART MUSEUM DRIVE
MILWAUKEE, WI 53202

414-224-3200 | www.mam.org

Instructions

Download this scavenger hunt and bring it to the Milwaukee Art Museum between February 7 and April 26, 2009, and see if you can find these faces hiding somewhere in the feature exhibition, *Jan Lievens: Out of Rembrandt's Shadow*.

**Look carefully;
they are very good at hiding!**



Baker/Rowland Galleries



Jan Lievens
Saint Paul, 1624–25
(detail)
Oil on panel
Agnes Etherington
Art Centre, Kingston
Gift of Alfred and Isabel Bader,
2006

Baker/Rowland Galleries



Jan Lievens
Lute Player, 1627 revised 1628
(detail)
Oil on panel
The Walters Art Museum,
Baltimore, Maryland
Gift of Dr. Francis D. Murnaghan
Fund, 1973

WHAT IS THE OBJECT UNDER THE PILE OF BOOKS?

DID YOU KNOW?

Every saint has an attribute—an object or symbol used to identify him/her. The sword is Saint Paul's attribute. You'll find an eagle in the background of John in the exhibition.

DID YOU KNOW?

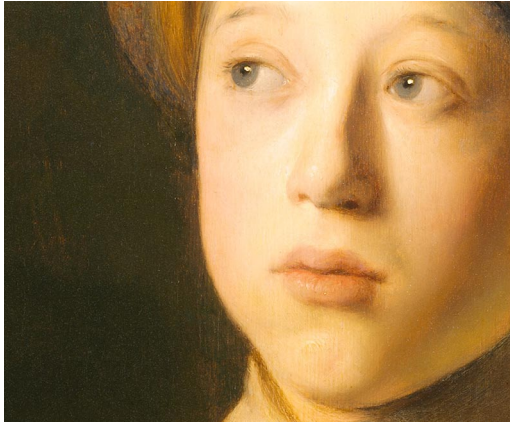
This is a very famous face. In fact, this is Jan Lievens' good friend Rembrandt, who is considered one of the most important painters in European art history. Lievens and Rembrandt often modeled for each other's paintings. Rembrandt is in three other paintings in the exhibition, can you find him?

WHAT IS REMBRANDT HOLDING?

That is a *lute*, the very early version of a guitar. We found two other lutes in the exhibition. Can you find them?



Baker/Rowland Galleries



Jan Lievens
Boy in a Cape and Turban, 1631
(detail)
Oil on panel
Private collection

CAN YOU COUNT ALL THE DIFFERENT MATERIALS IN THIS BOY'S OUTFIT?

DID YOU KNOW?

In 1631, this outfit was the “cool” outfit for not only a young man but also a grown Dutch man. At this time, the Dutch were traveling and trading with countries like Turkey and Egypt, bringing back lavish garments, spices, and other goods. Three other men are dressed similarly in the exhibition. Can you find them?

Draw your own costume here!



Baker/Rowland Galleries



Jan Lievens
The Geographer
1665 (detail)
Oil on canvas
Hoogheemraadschap van
Rijnland Lieden, The Netherlands

Baker/Rowland Galleries



Jan Lievens
Preciosa and Doña Clara
("The Soothsayer")
1631 (detail)
Oil on canvas
Staatliche Museen zu Berlin,
Gemäldegalerie

CAN YOU FIND? (Check the box for each item you find.)

- A protractor
(a half-circle-shaped tool used to measure angles)
- A globe
- A ruler
- An inkpot and feather quill
(used for writing before the pen was invented)
- A map
- A compass

DID YOU KNOW?

All the tools and instruments on this table were used by mathematicians and geographers. We can tell this man is a scholar by his long robe and beret. This painting was done for the organization in charge of controlling the water levels in the Netherlands to protect the region from flooding. The picture still hangs above the fireplace of that organization today, and controlling the water levels is still a very important job in the Netherlands.

HOW MANY PEOPLE ARE IN THIS PAINTING?

DID YOU KNOW?

Lievens was fascinated with the effects of age on the skin, and he used different painting techniques to create those effects. Look at the ways Lievens uses paint to show the wrinkly skin of an old person and the soft skin of youth.

We found 10 paintings in the exhibition that have people of different ages in them, can you find them all?