

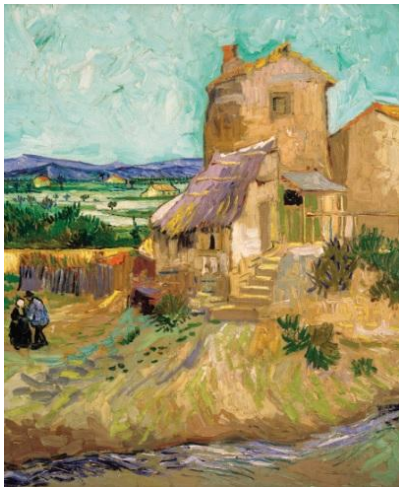


## MILWAUKEE ART MUSEUM

### **FOR IMMEDIATE RELEASE**

#### **MILWAUKEE ART MUSEUM TO PRESENT ART WORLD REBELS *Midwest Exclusive Will Include Van Gogh, Pollock, Picasso, Warhol and More***

**MILWAUKEE** – Beginning June 18, the Milwaukee Art Museum will present, [Van Gogh to Pollock: Modern Rebels](#), an exclusive touring exhibition that will showcase nearly 70 masterpieces from some of the most famous artists of the 20<sup>th</sup> century.



The Old Mill by Vincent van Gogh (1888) will be featured in the exhibition.

The exhibition brings together paintings and sculpture by 68 artists who shaped the course of modern art. The collection is drawn from the [Albright-Knox Art Gallery](#) in Buffalo, New York – which has one of the most respected collections of 20<sup>th</sup> century art in the country – and includes work by Vincent van Gogh, Edgar Degas, Pablo Picasso, Marc Chagall, Salvador Dali, Frida Kahlo, Georgia O’Keeffe, and Andy Warhol, as well as one of Jackson Pollock’s finest drip paintings.

“*Van Gogh to Pollock* will be a visually powerful, experiential journey for any art enthusiast,” said Brady Roberts, chief curator for the Milwaukee Art Museum. “This is the best chance most people will have to see key works of Post-Impressionism to Pop Art, many of which have not toured in decades.”

“These modern art all-stars were rebelling against the academic norm. They took risks and challenged the art world status quo,” said Roberts. “They were innovators responding to the world around them, and the results are compelling.”

With the museum’s annual [Lakefront Festival of Art](#) (LFOA) scheduled June 19–21, the opening weekend of the exhibition, visitors will be offered two different art experiences for one ticket – LFOA and *Van Gogh to Pollock*. LFAO tickets are \$17 for general admission, \$14 for students and seniors, and \$10 for Museum Members. Tickets can be purchased in advance at area businesses or online at [mam.org/lfoa](http://mam.org/lfoa).

*Van Gogh to Pollock: Modern Rebels* will be on view through Sunday, September 20. For more information, visit <http://mam.org/>. High-resolution [images](#) of work featured in the exhibition are available.

### **Exhibition Overview**

*Van Gogh to Pollock* unfolds chronologically, beginning with Post-Impressionism, and explores the radical innovators of the modern era—and the art that changed how we see the world. Cubism provided multiple views simultaneously; Surrealism sought to give the unconscious mind conscious form. With the Abstract Expressionists, New York took the reign from Paris as the Western art capital, and the artists of Pop Art called attention to the new culture of consumerism, appropriating its everyday imagery and products. This great collection allows visitors to see a rich, comprehensive snapshot of art making as a series of rebellions.

### **Additional Resources**

This exhibition was initiated by the Albright-Knox Art Gallery, Buffalo, New York, and was organized by Albright-Knox Chief Curator Emeritus Douglas Dreishpoon. It is supported by an indemnity from the Federal Council on the Arts and the Humanities. Presented locally by BMO Private Bank.

### **About the Milwaukee Art Museum**

Prominently situated on the shores of Lake Michigan, the Milwaukee Art Museum campus welcomes over 400,000 visitors annually. The Museum was founded over 125 years ago and is the largest and most significant art museum in Wisconsin. It houses a rich collection of over 30,000 works, with strengths in 19th- and 20th-century American and European art, contemporary art, and American decorative arts. It is the world's leading repository for work by untrained creators and has one of the largest collections of works by Georgia O'Keeffe. The Museum's celebrated Santiago Calatrava–designed Quadracci Pavilion, completed in 2001, showcases both Museum-produced and traveling feature exhibitions.

### **Restore. Reinstall. Reimagine.**

In fall 2014, the Museum began an ambitious project to renovate its two oldest buildings, the Eero Saarinen–designed War Memorial Center (1957) and the David Kahler–designed addition (1975), which house the Museum's Collection Galleries. Increased gallery space, including an entire floor dedicated to photography and new media, an improved gallery layout, and a new lakeside entrance are among the improvements planned. The collections will be off view through fall 2015; however, the Museum is open throughout construction, with a vibrant schedule of exciting exhibitions, educational offerings, and special programs in the Quadracci Pavilion. For more information, visit [mam.org](http://mam.org).

### **The Old Mill, Vincent van Gogh (1888)**

Vincent van Gogh (Dutch, 1853–1890). *La Maison de la Crau (The Old Mill)*, 1888. Oil on canvas, 25 1/2 x 21 1/4 inches (64.8 x 54 cm). Collection Albright-Knox Art Gallery, Buffalo, New York. Bequest of A. Conger Goodyear, 1966.

###

### **Media Contact:**

Andy Larsen

414-271-0101 ext. 119; [alarsen@boelterlincoln.com](mailto:alarsen@boelterlincoln.com)

Jessica Levine

414-271-0101 ext. 101; [jlevine@boelterlincoln.com](mailto:jlevine@boelterlincoln.com)